

# BUG Rider

PGO SCOOTERS

## **PARTS CATALOG** (BR250-DUAL SEAT)



PGO SCOOTERS

PGO SCOOTERS



E 1

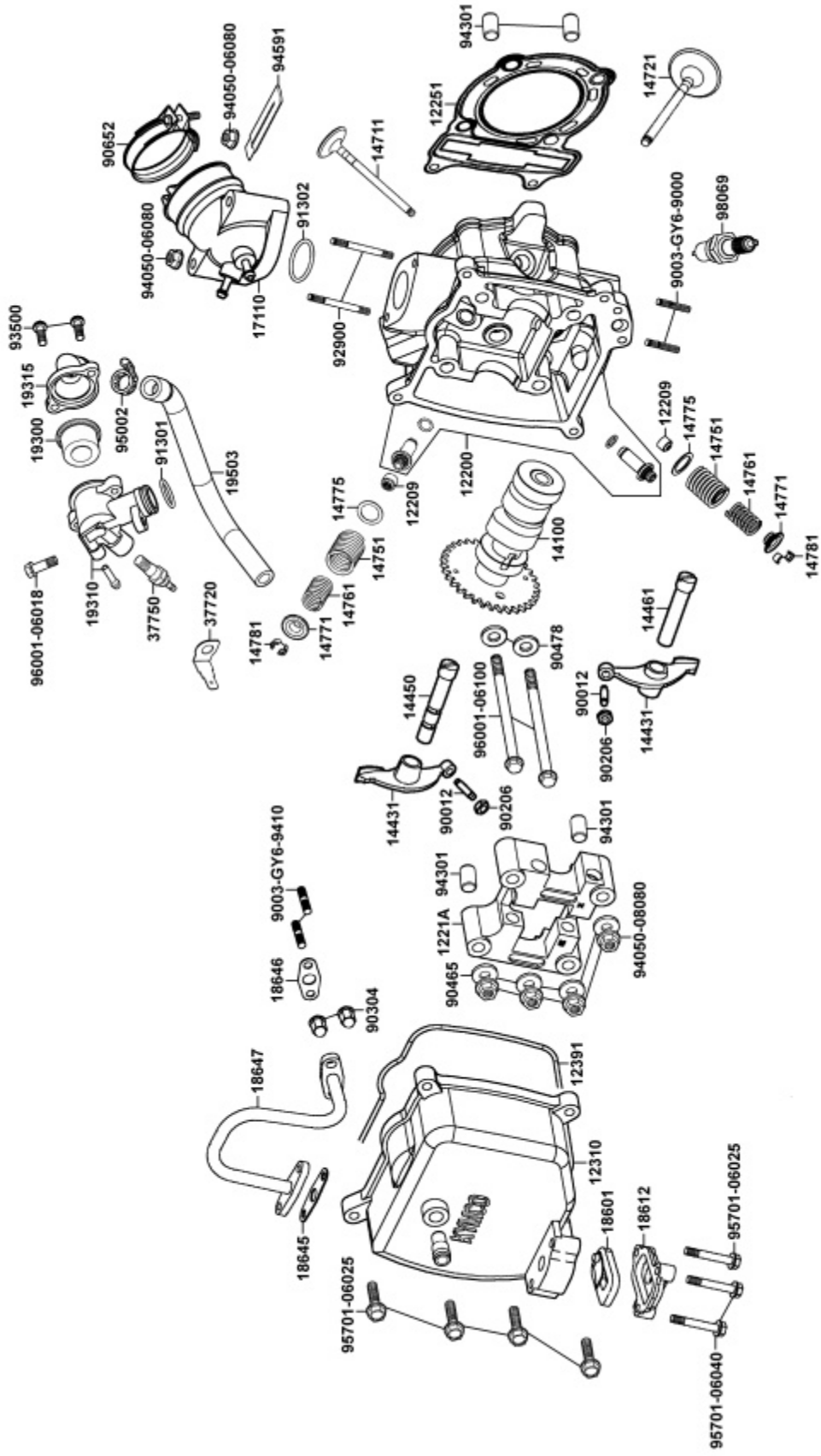
Crank Case

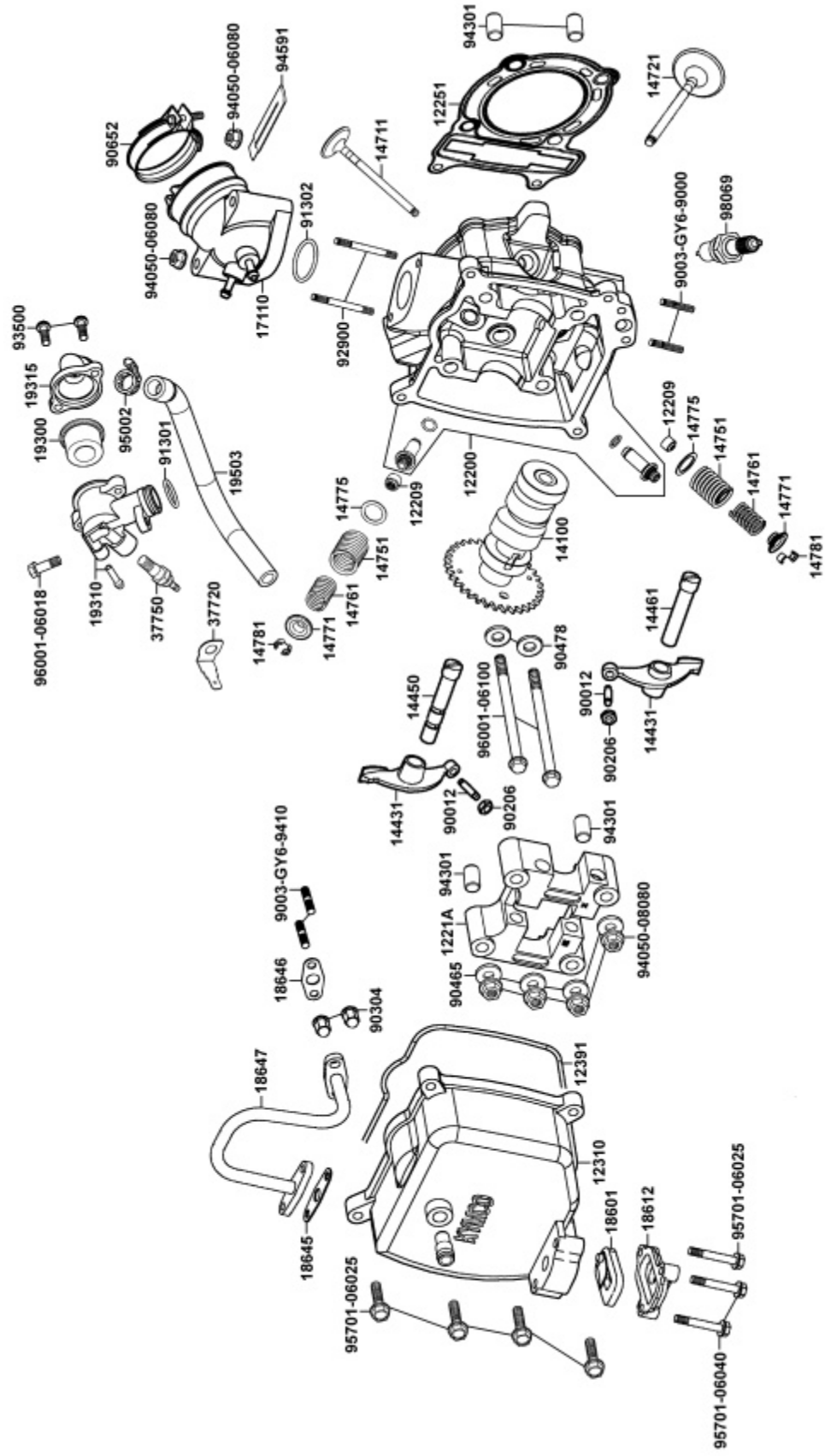
PGO - 250 ENGINE

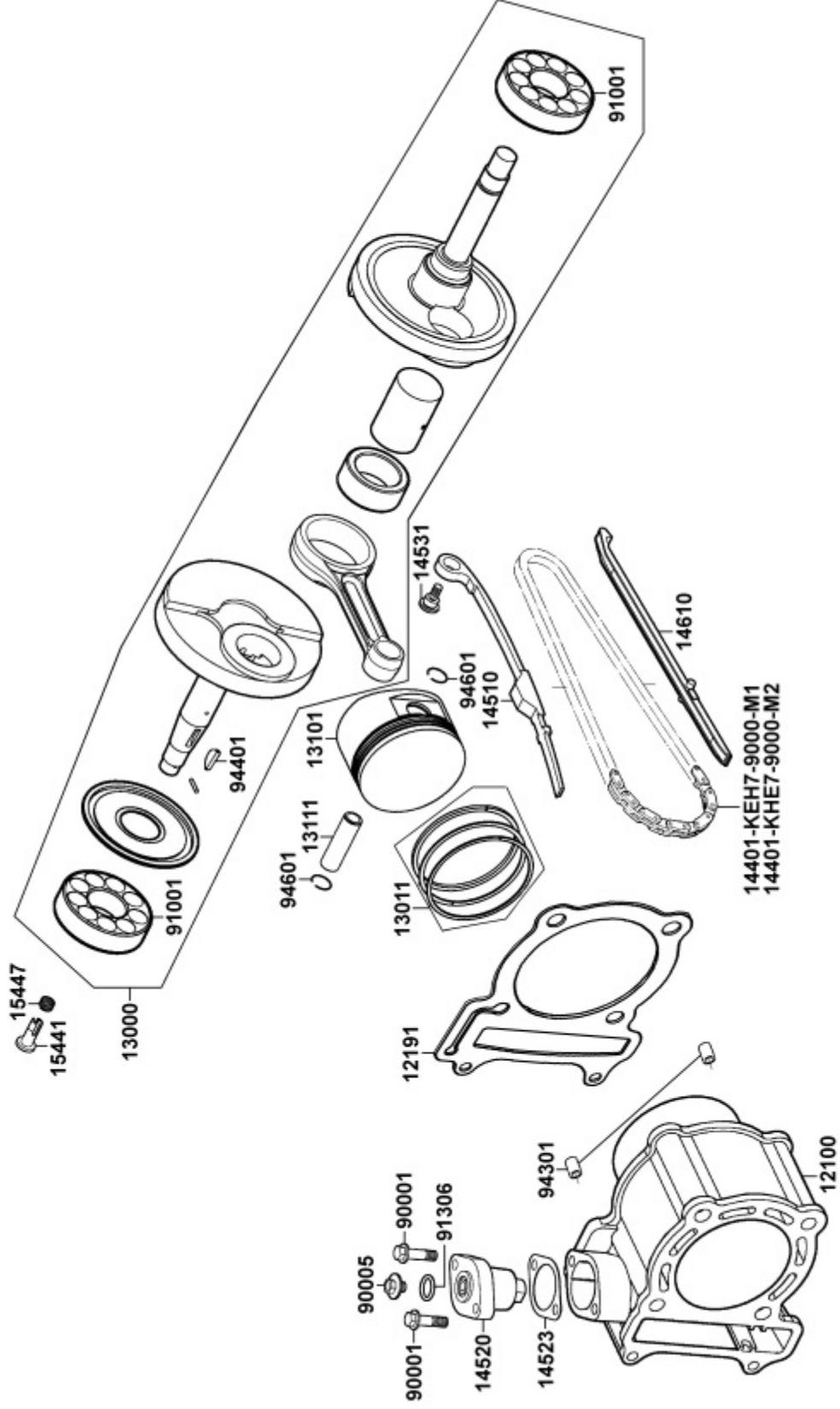
@

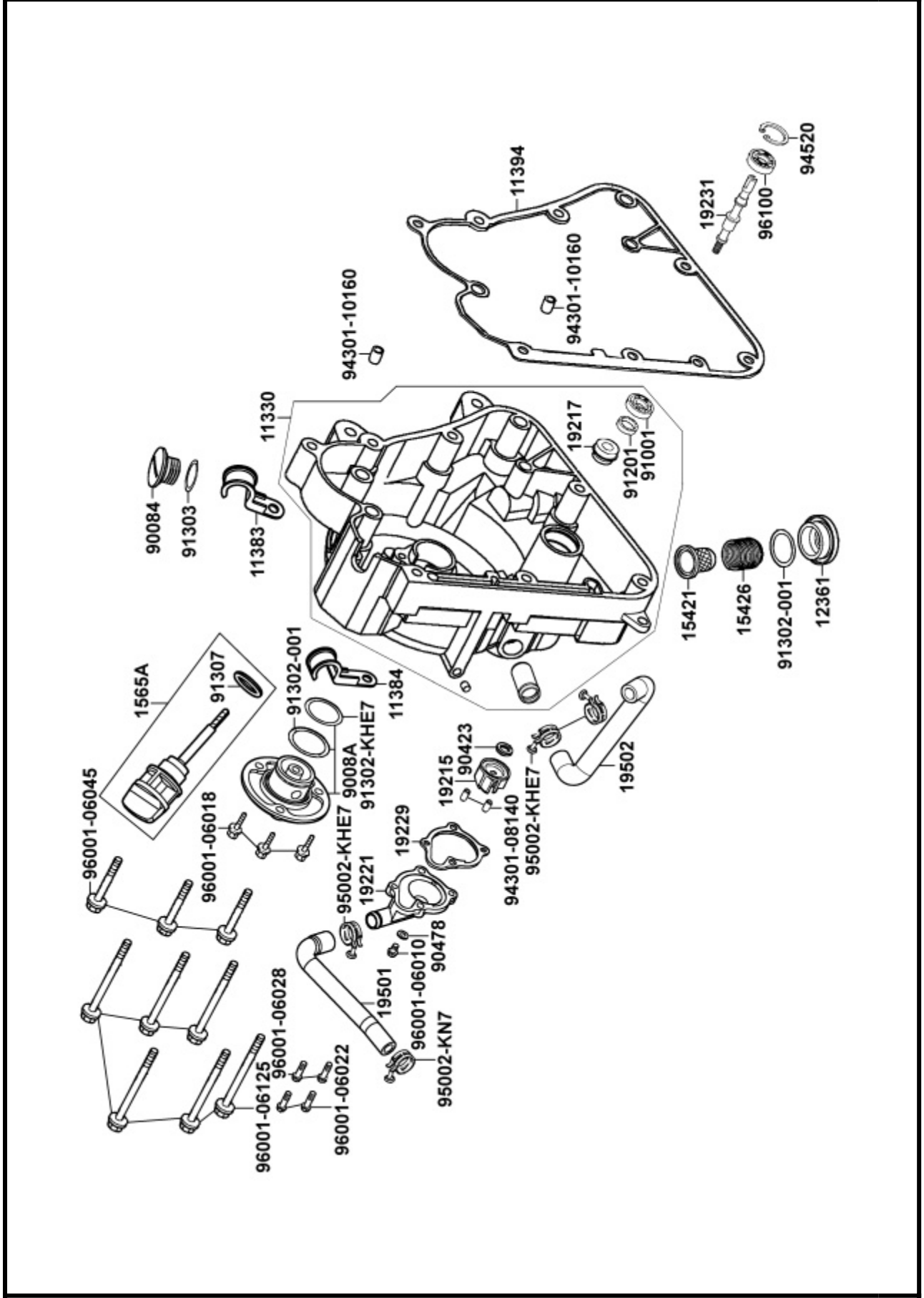
Exploded view diagram of the PGO 250 engine crank case assembly. The diagram shows the following components and their part numbers:

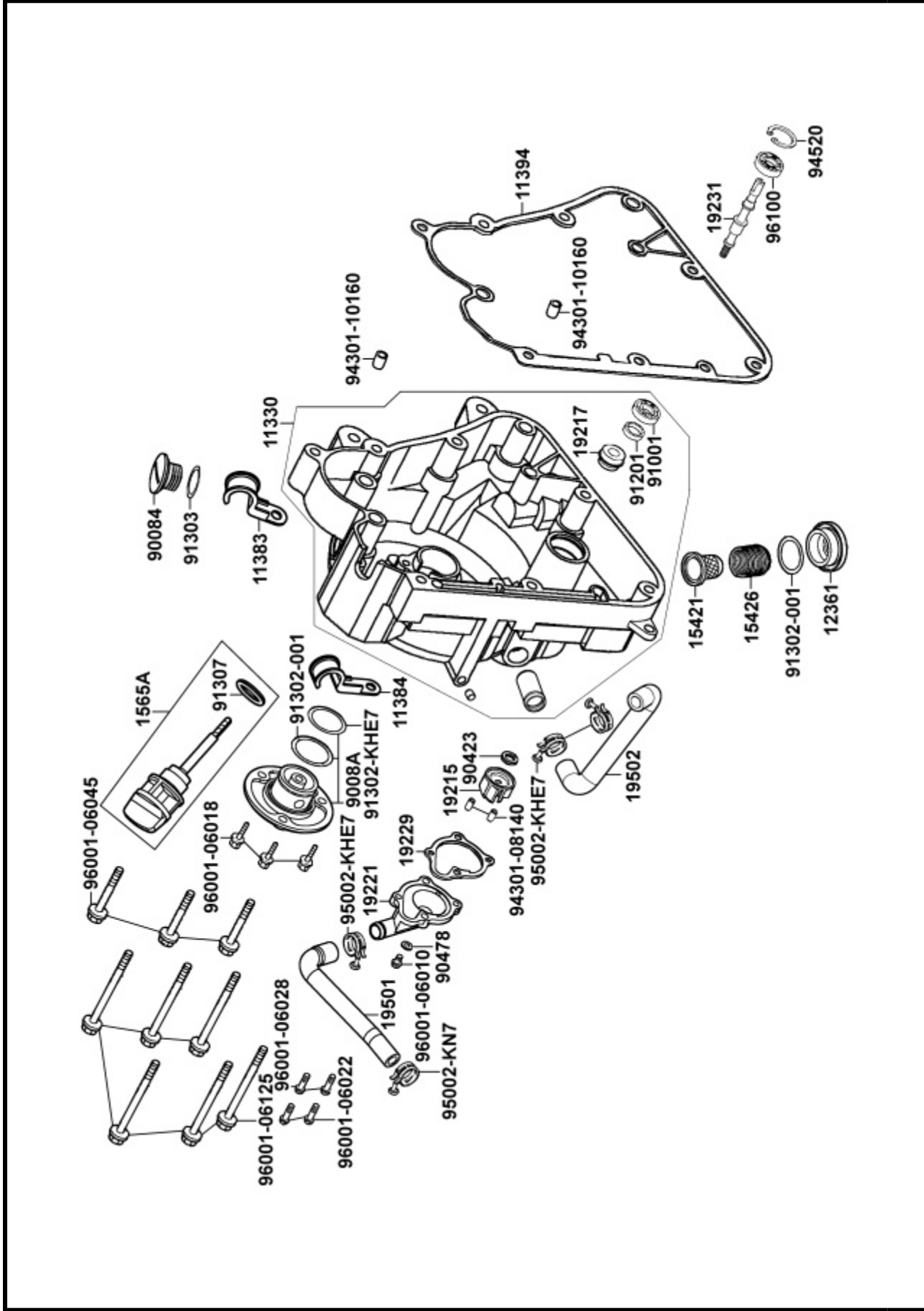
- 90031
- 90032
- 94301
- 11192
- 11103
- 96001-06050
- 11100
- 94301
- 11200
- 9052A
- 50504
- 96001-06016
- 11395
- 94301
- 91255
- 96100-63040
- 96100-63020
- 91003
- 11103
- 11102
- 90474
- 95701-08012
- 91202
- 94301
- 96001-06016
- 11341
- 96001-06032
- 93903
- 11383
- 1134A
- 95701-06016

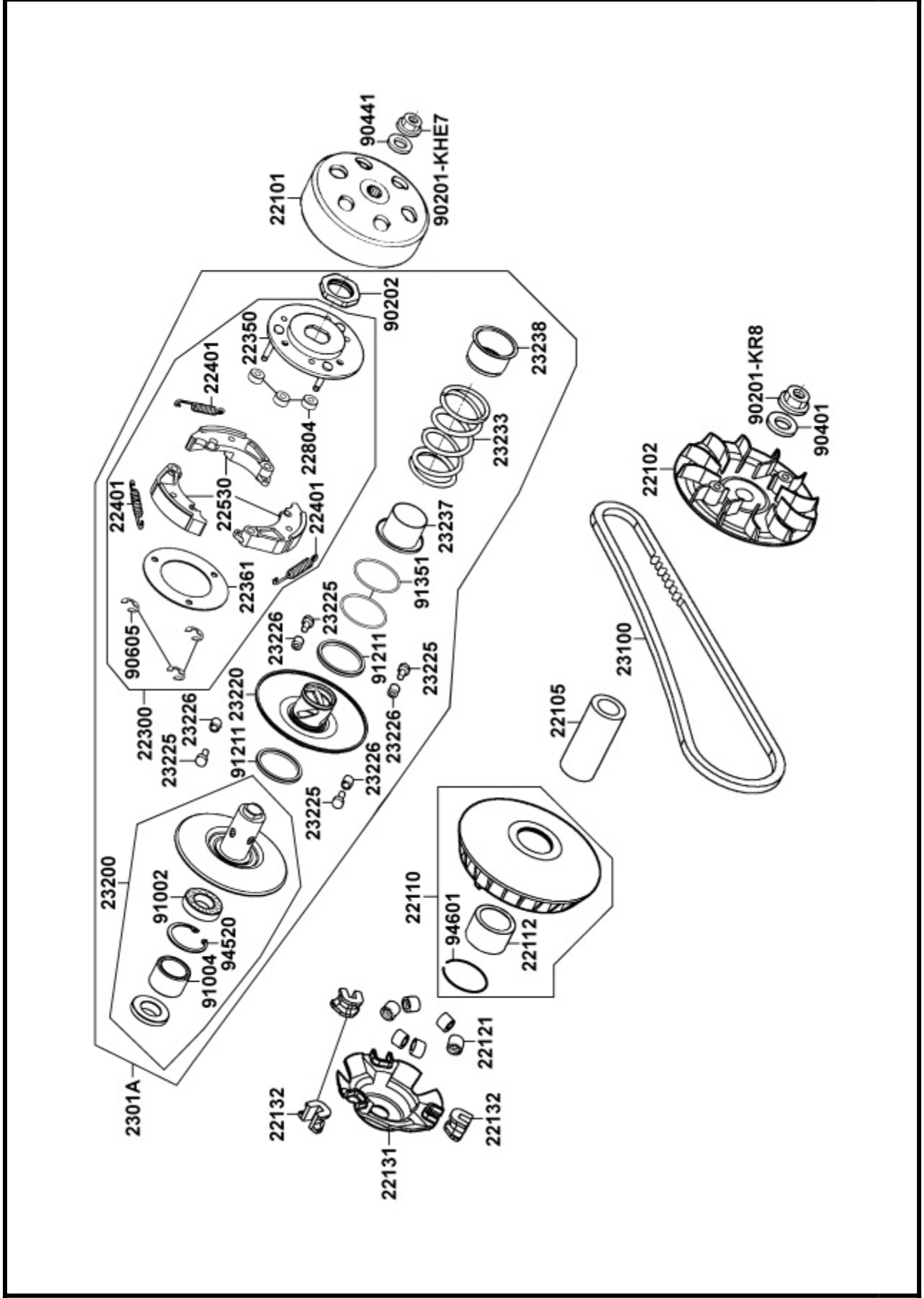




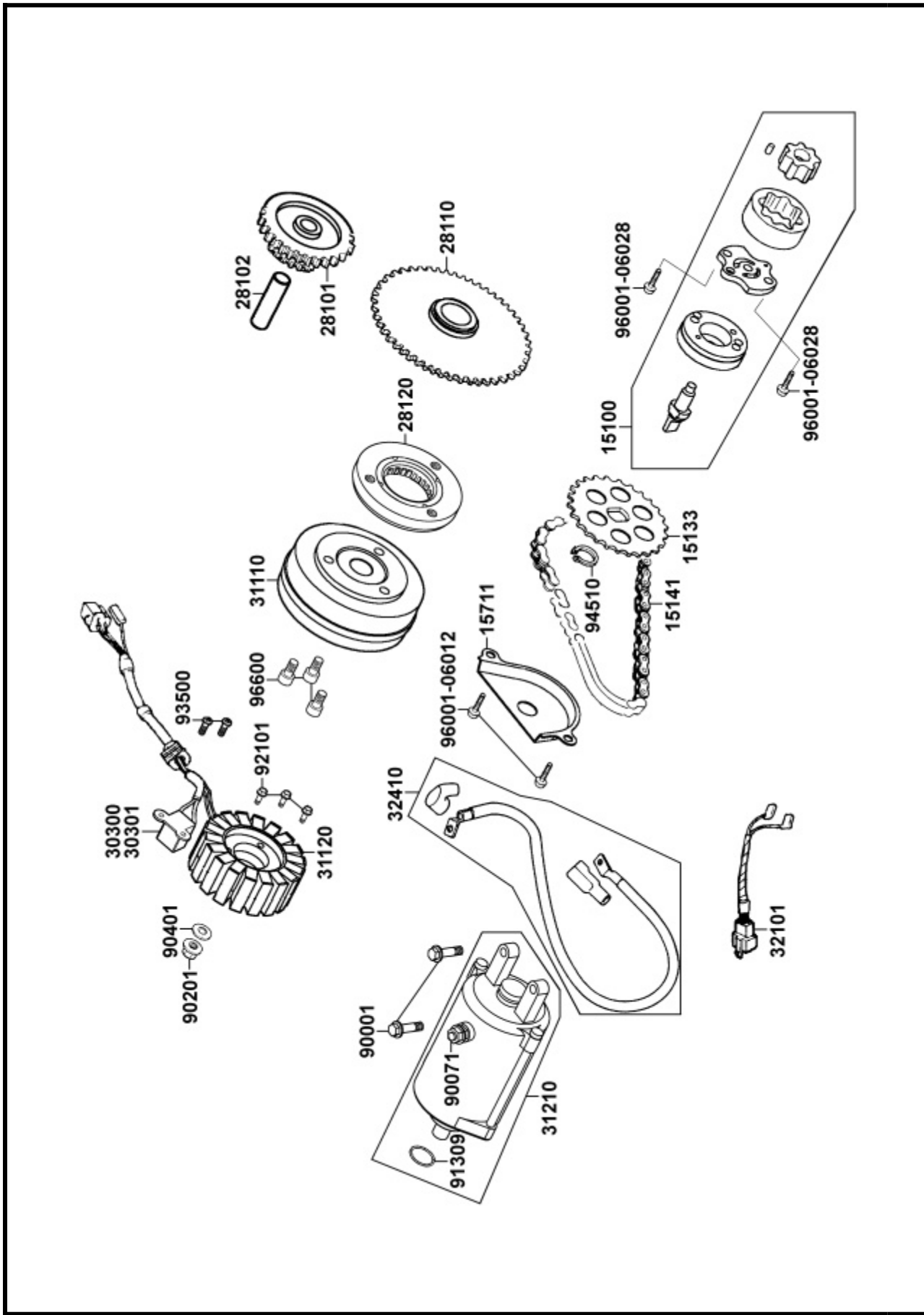


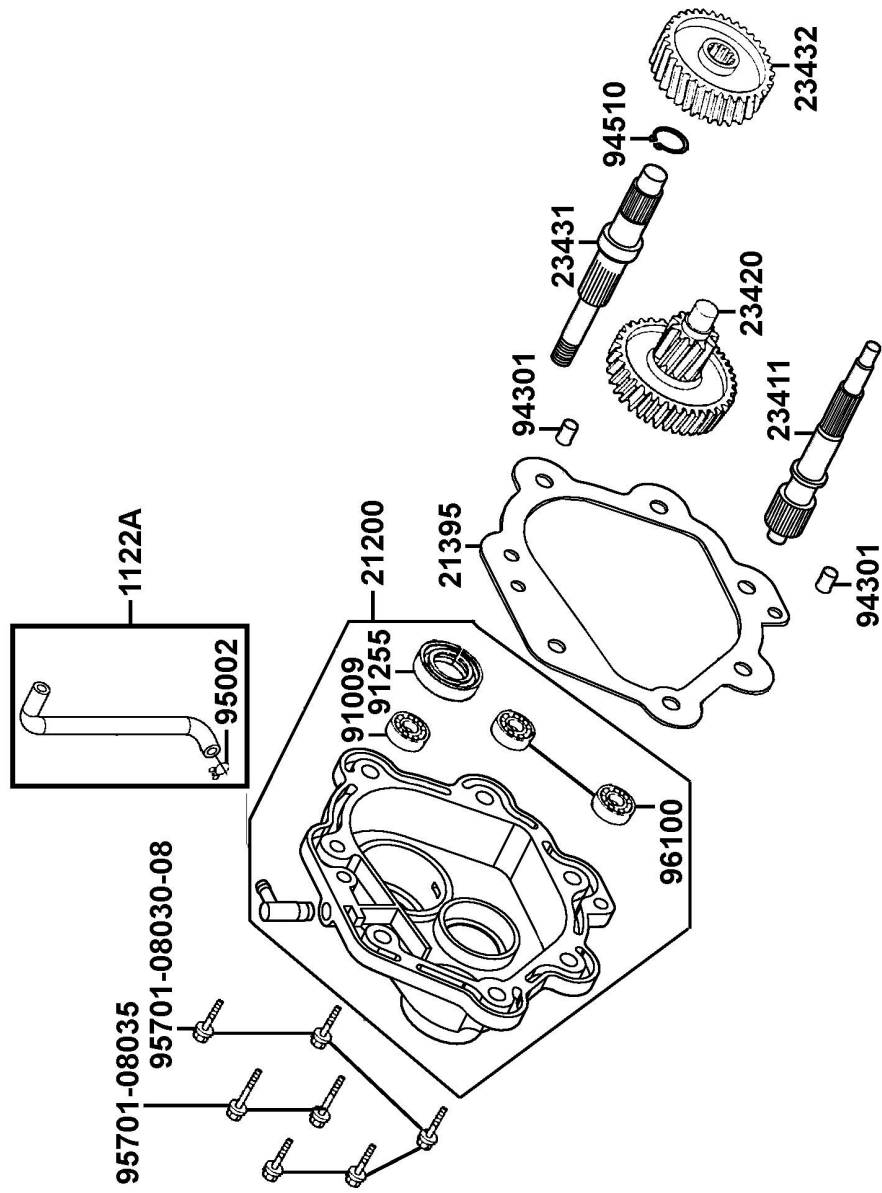






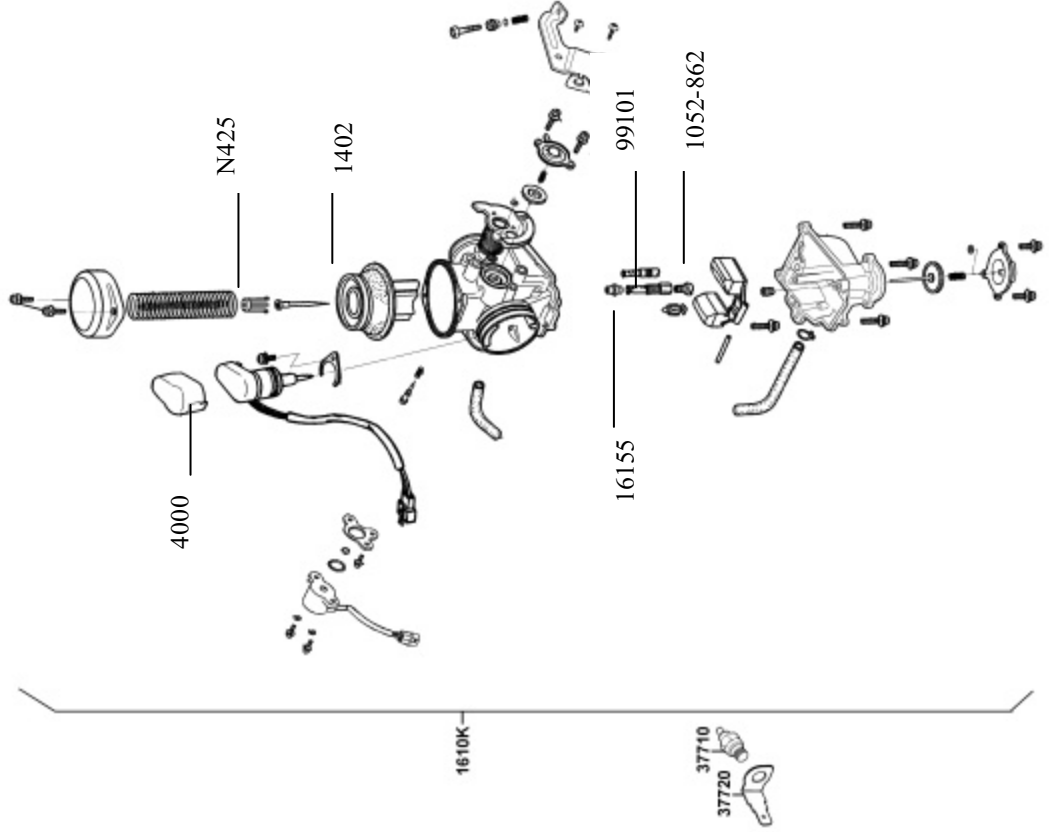




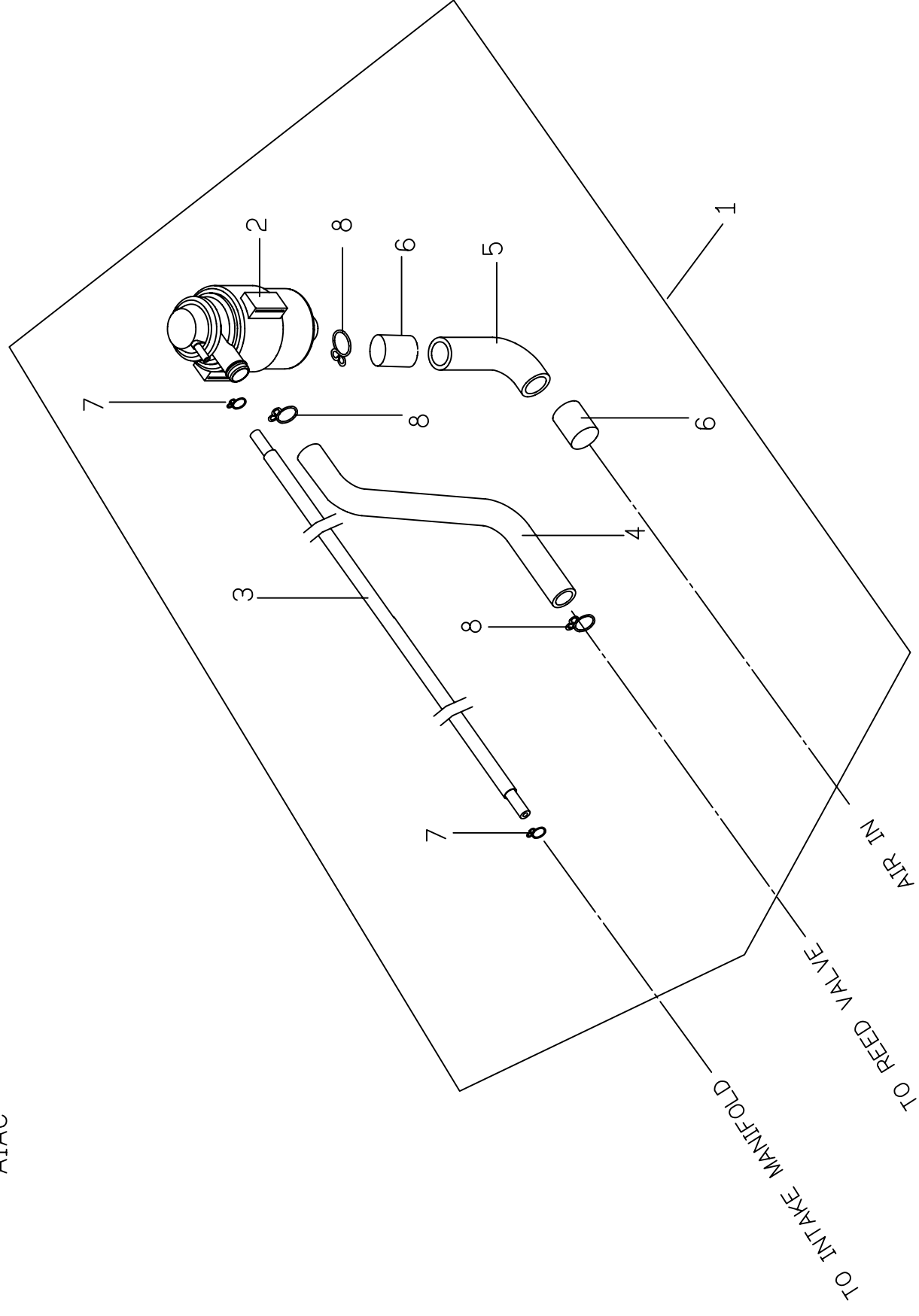


# E8 Carburetor

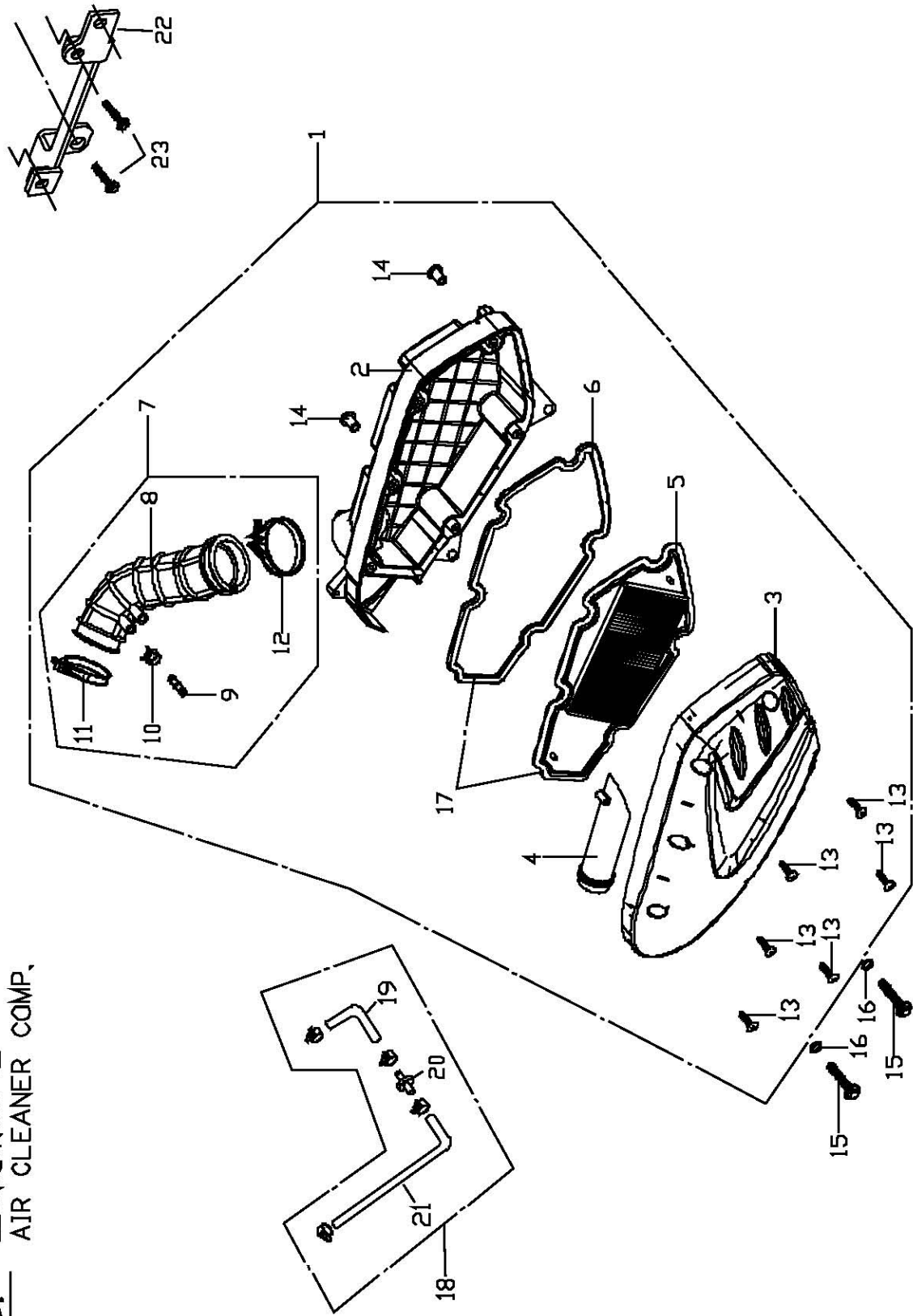
# PGO 250 ENGINE



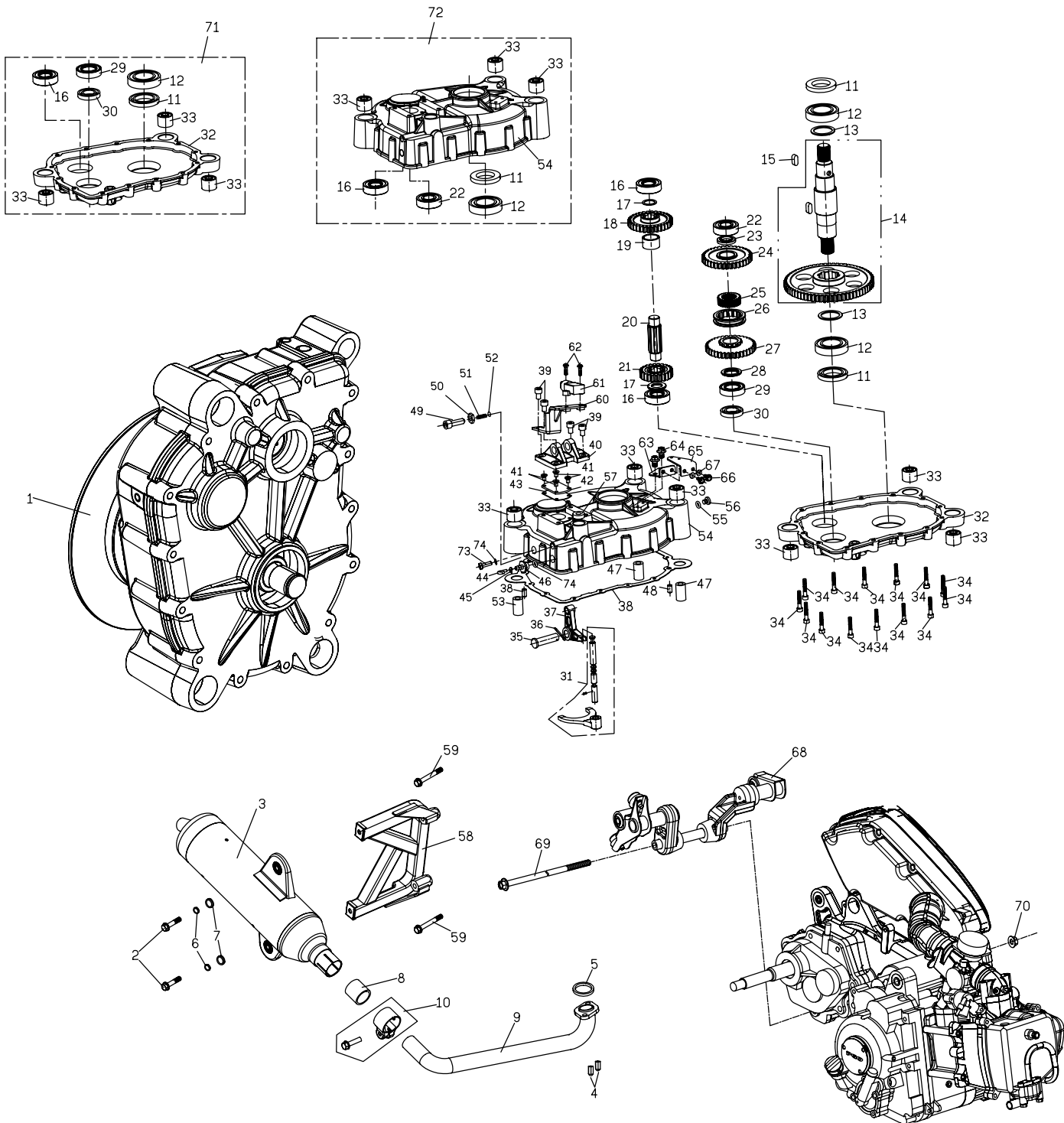
E9. 空氣導入控制閥  
AIAC



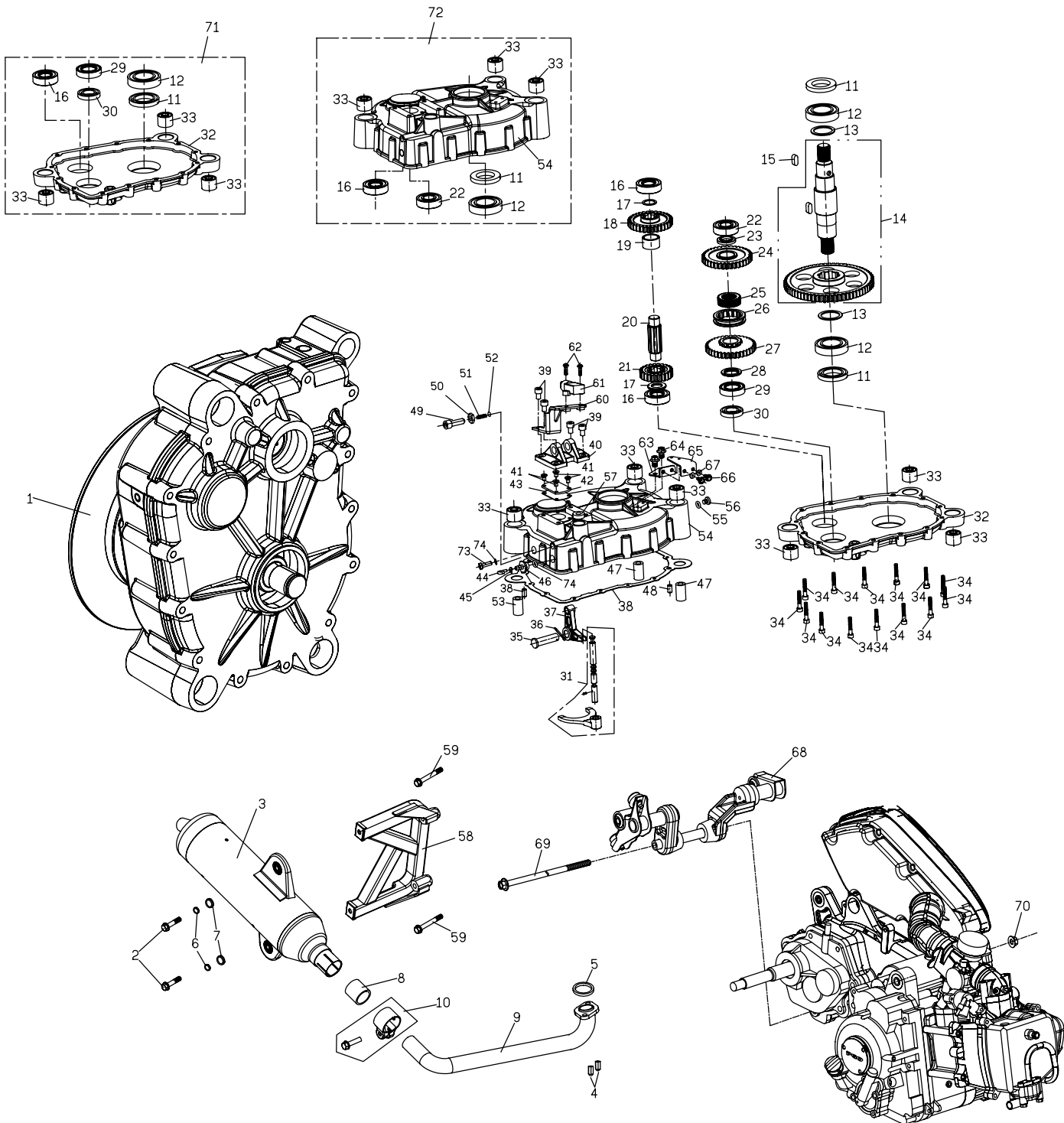
E10. 空氣濾清器組合  
AIR CLEANER COMP.



# F1.REVERSE ASSY. BR-250DUAL

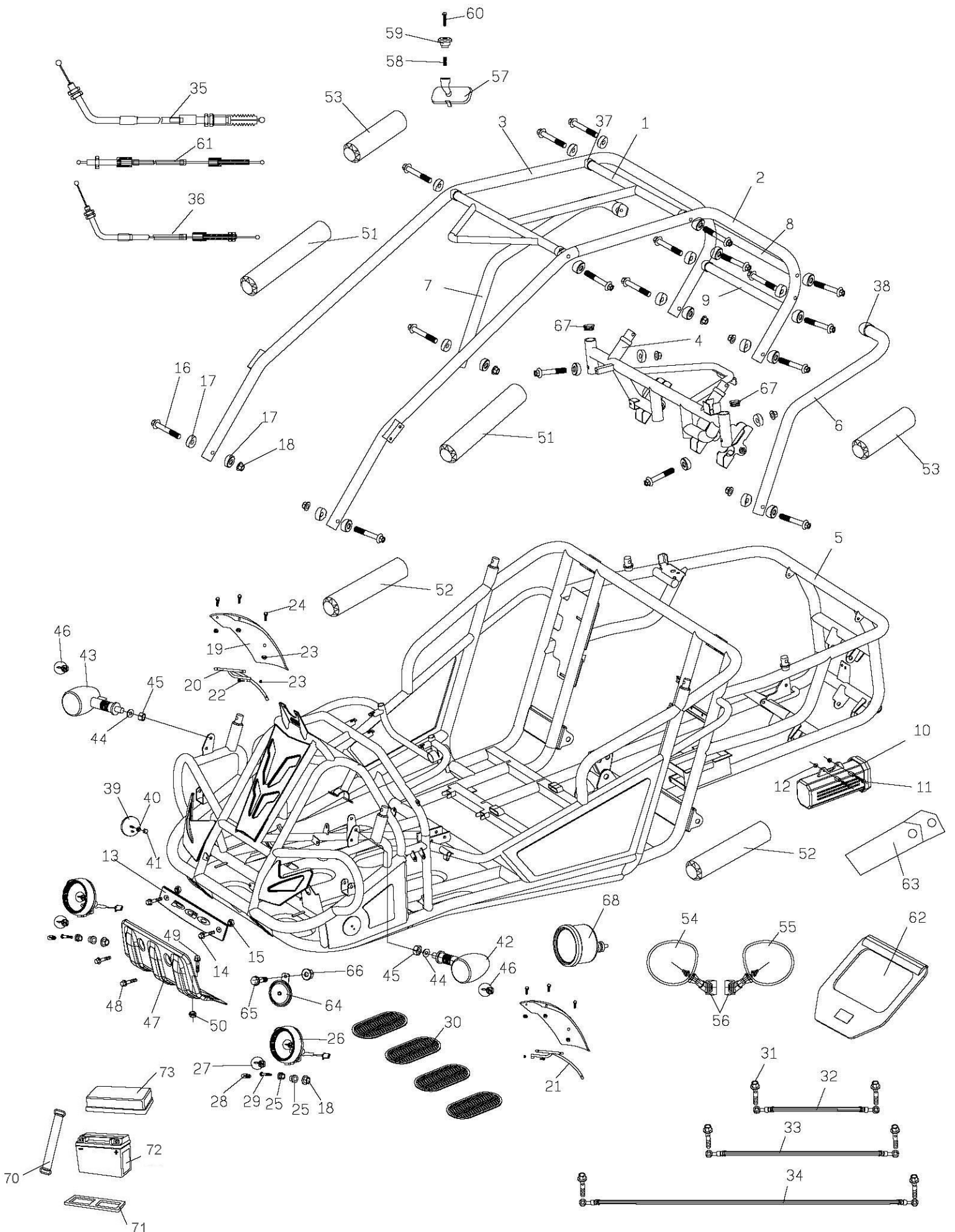


# F1.REVERSE ASSY. BR-250DUAL



# F2-1 FRAME GROUP

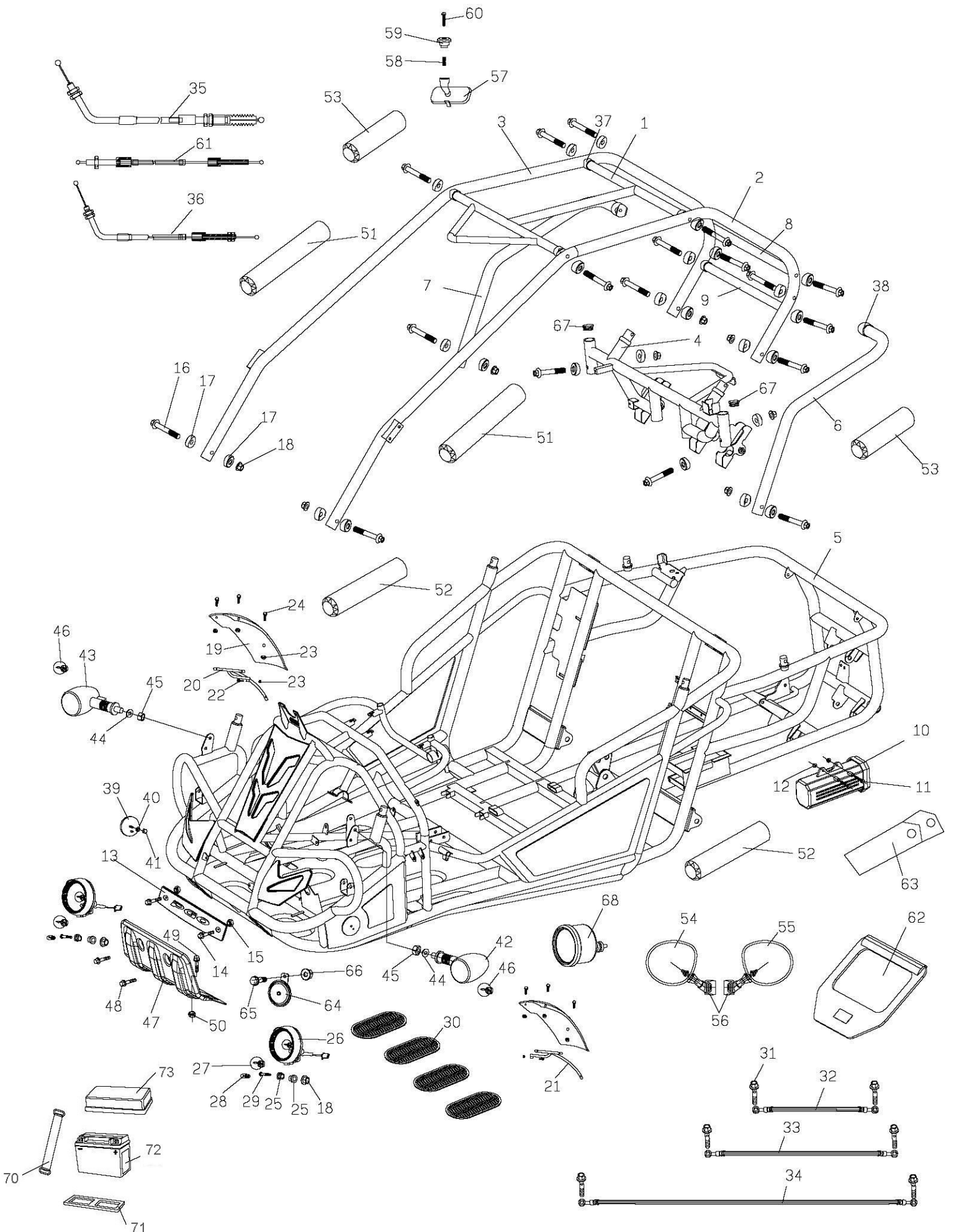
## BR-250DUAL





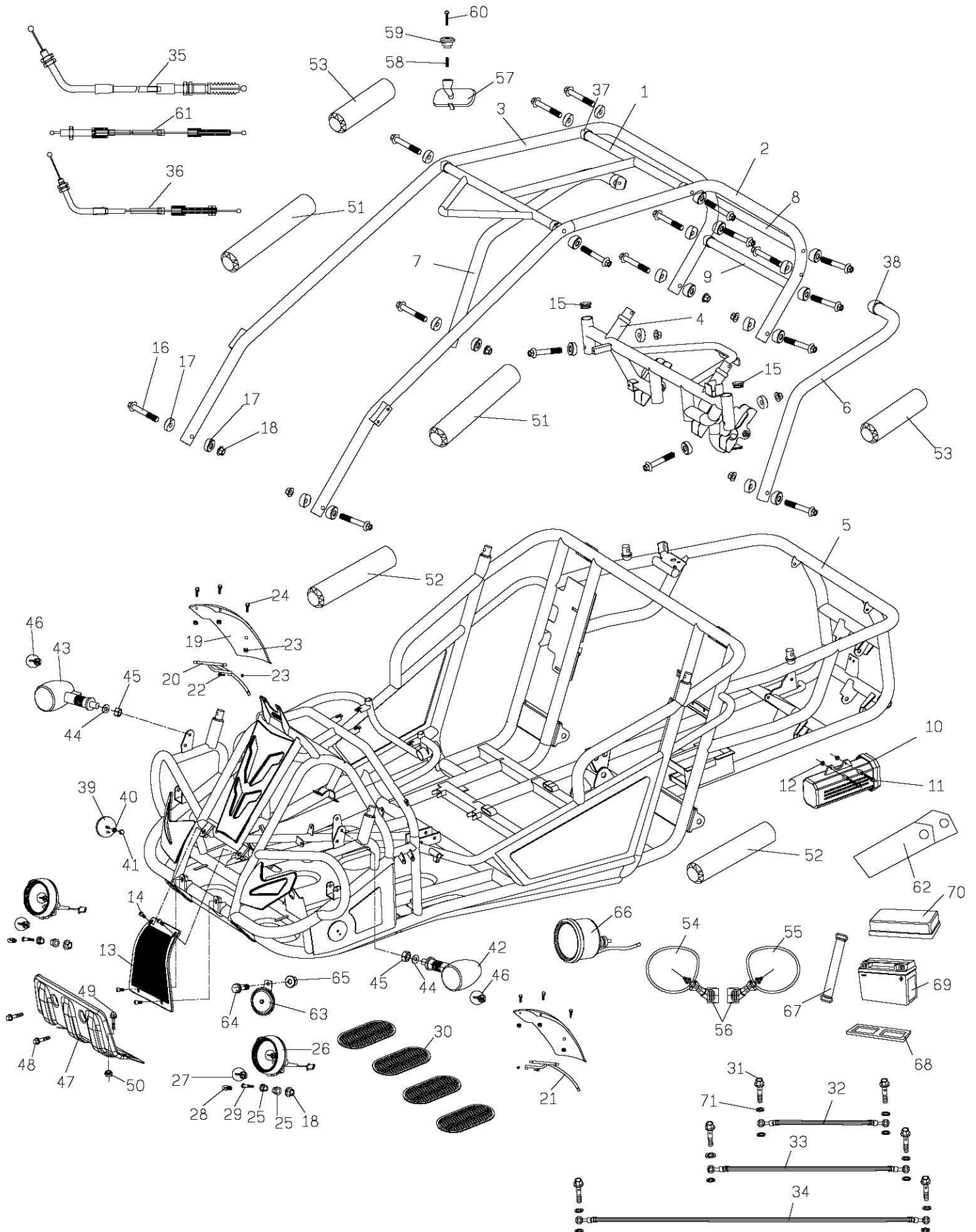
# F2-1 FRAME GROUP

## BR-250DUAL



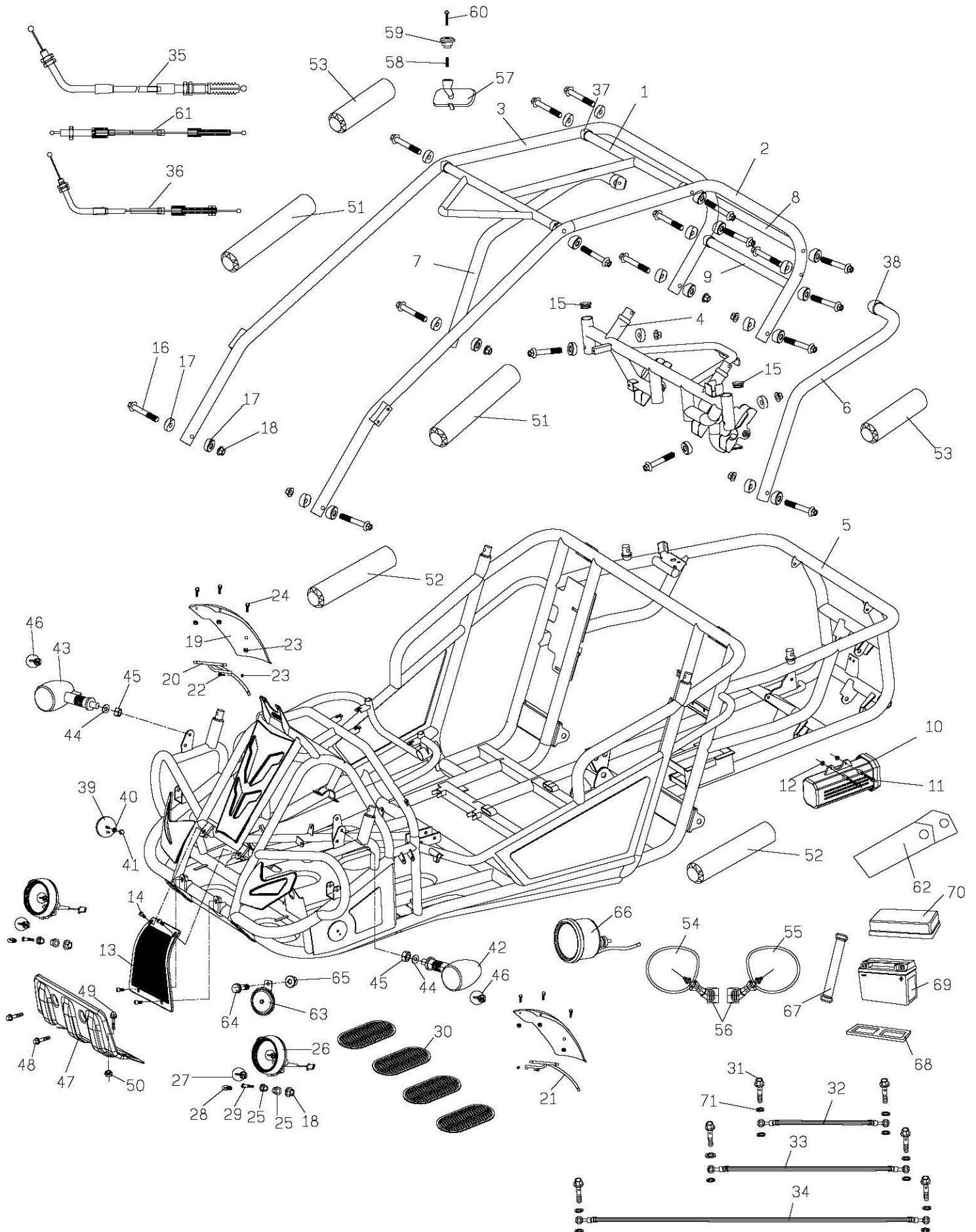
# F2-2 FRAME GROUP

## BR-250DUAL

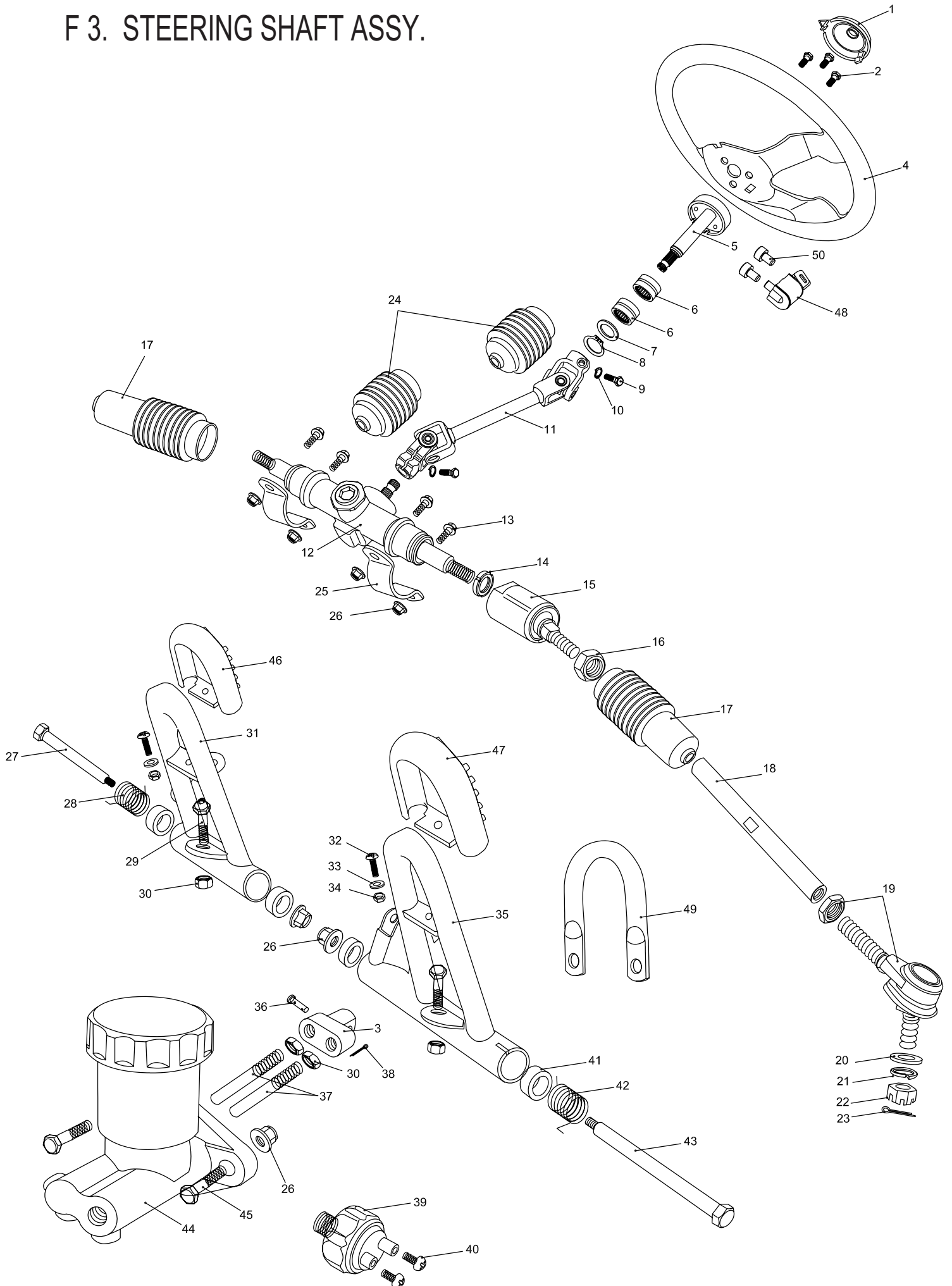


# F2-2 FRAME GROUP

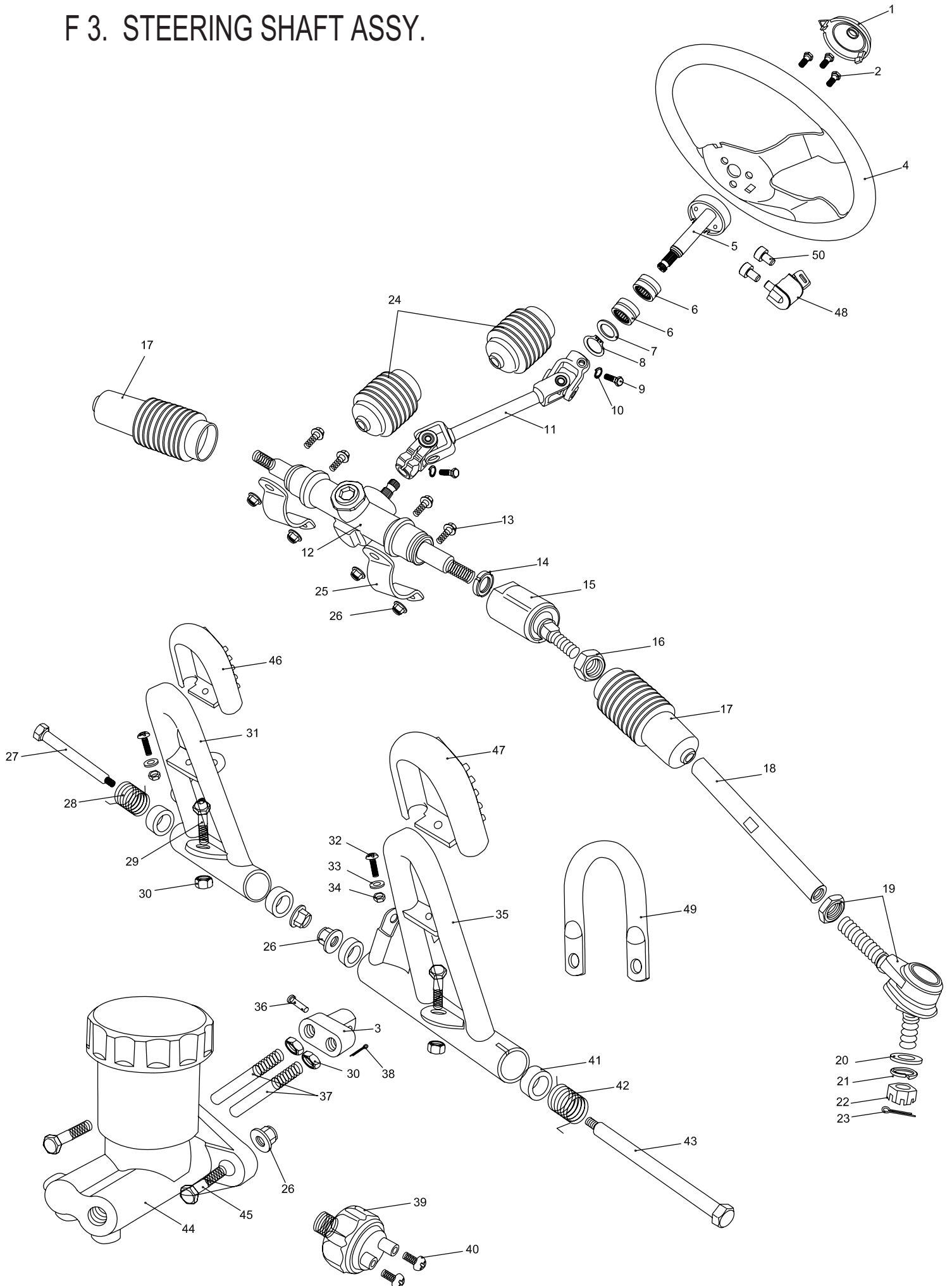
## BR-250DUAL



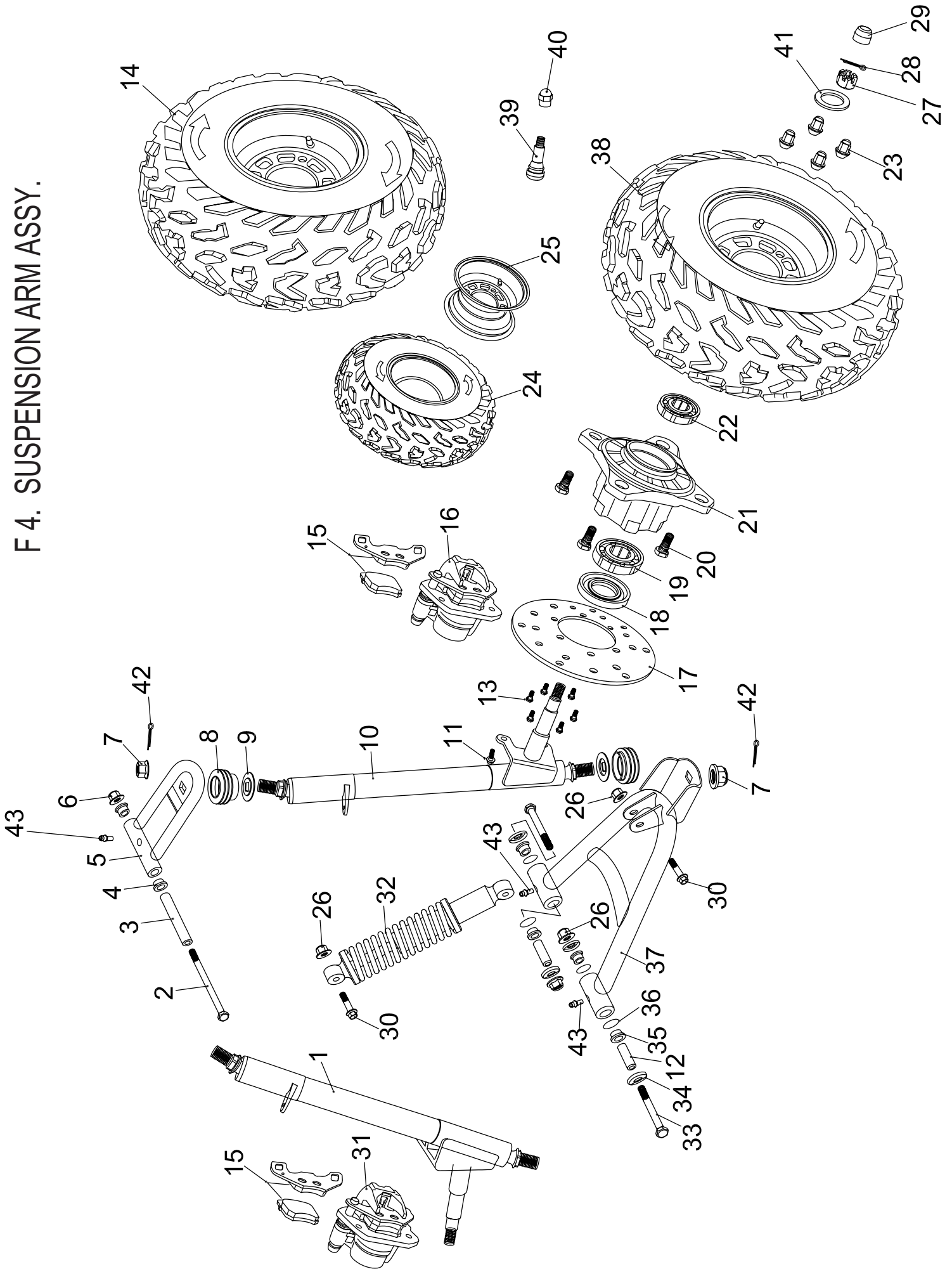
# F 3. STEERING SHAFT ASSY.



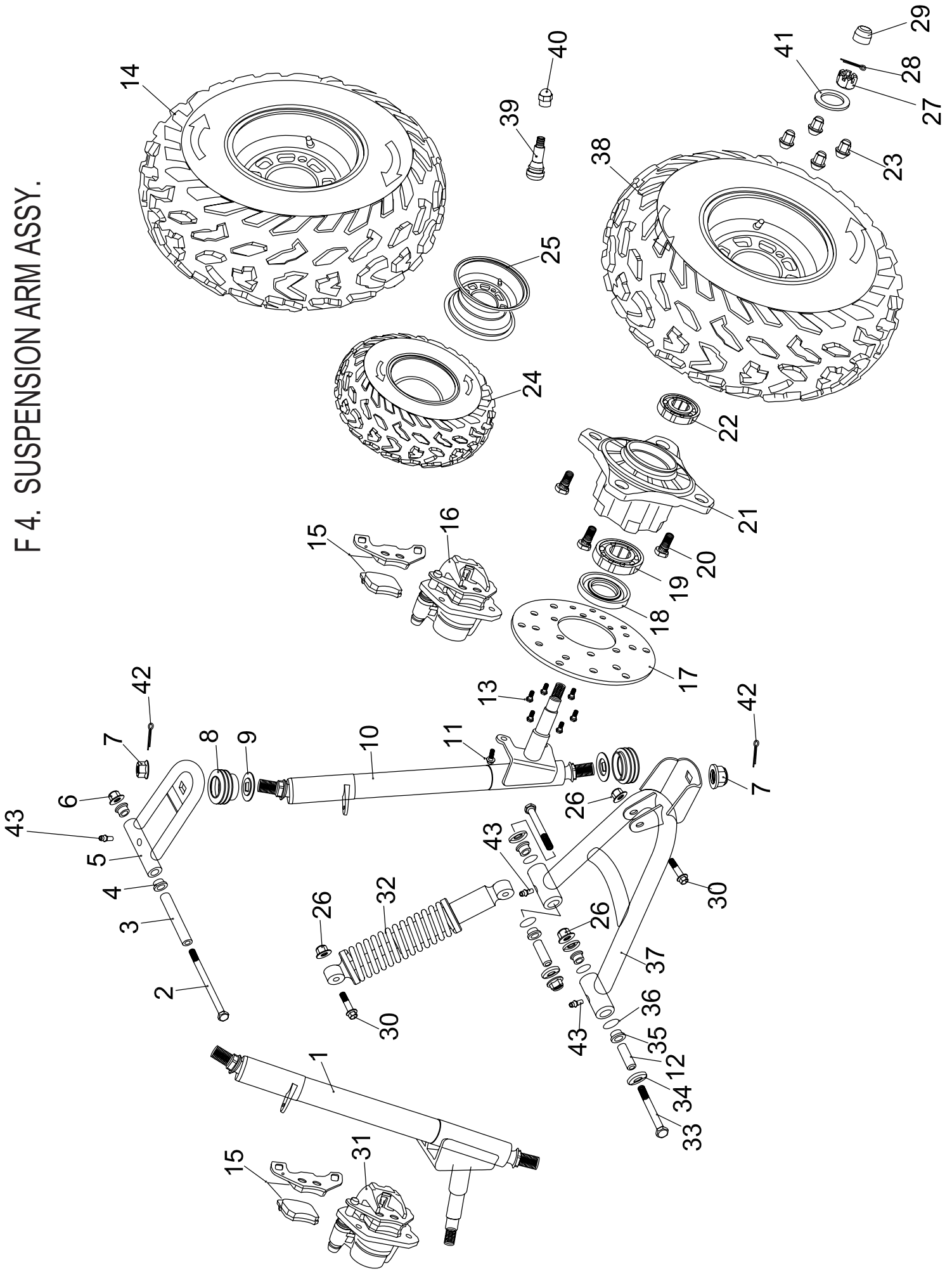
# F 3. STEERING SHAFT ASSY.



# F 4. SUSPENSION ARM ASSY.

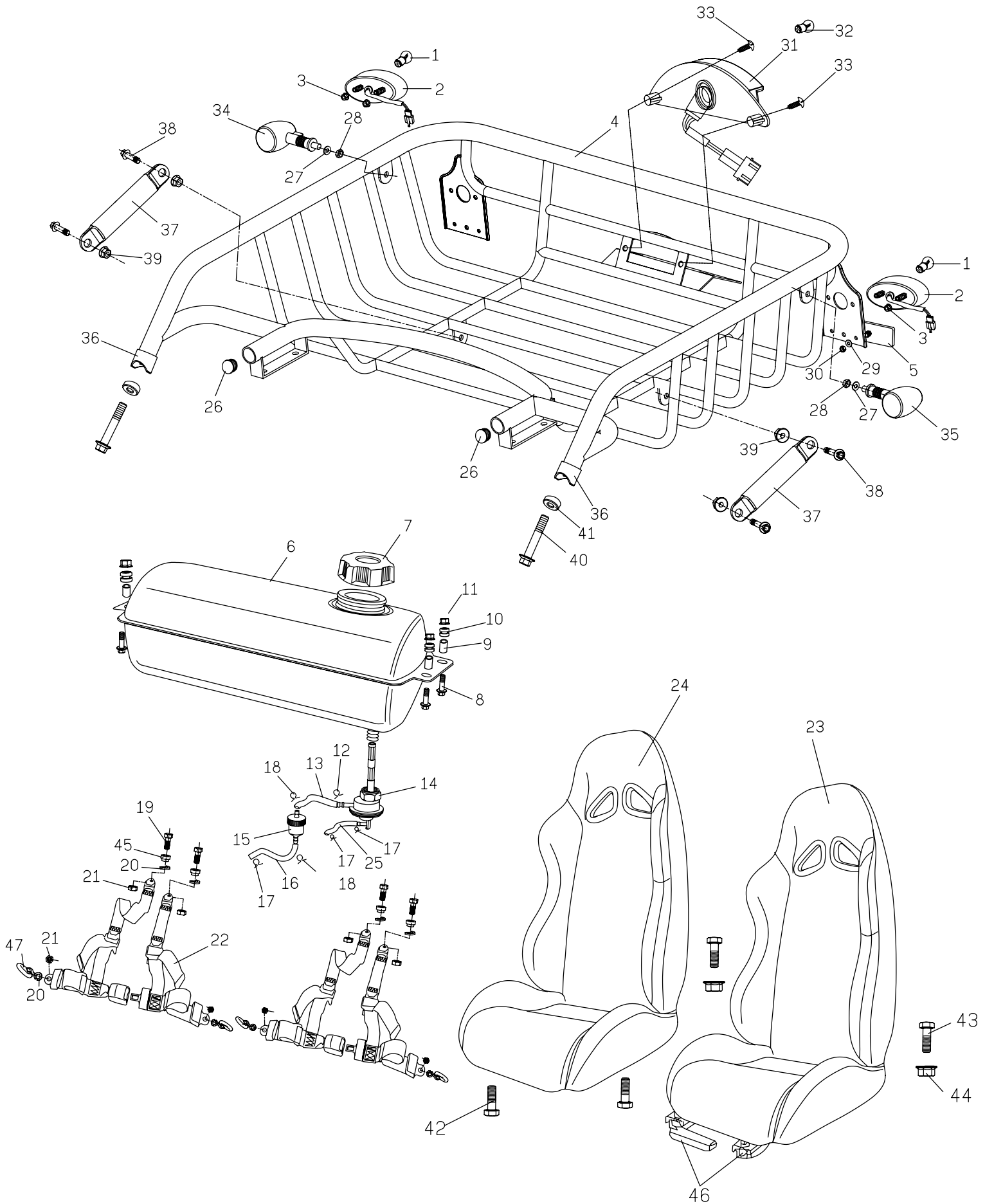


# F 4. SUSPENSION ARM ASSY.



# F5.REAR CARGO RACK/SEAT/BELT

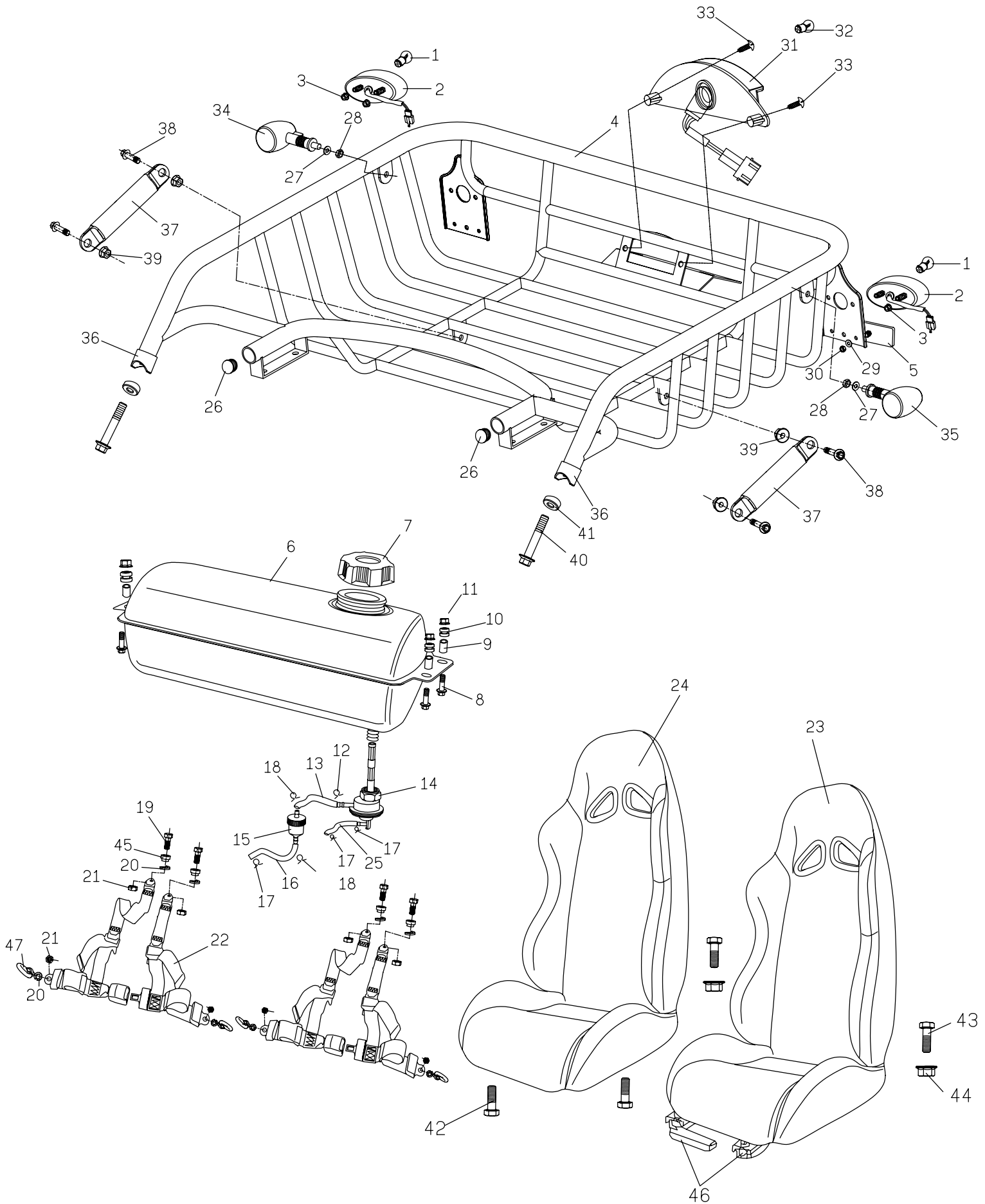
BR-250DUAL





# F5.REAR CARGO RACK/SEAT/BELT

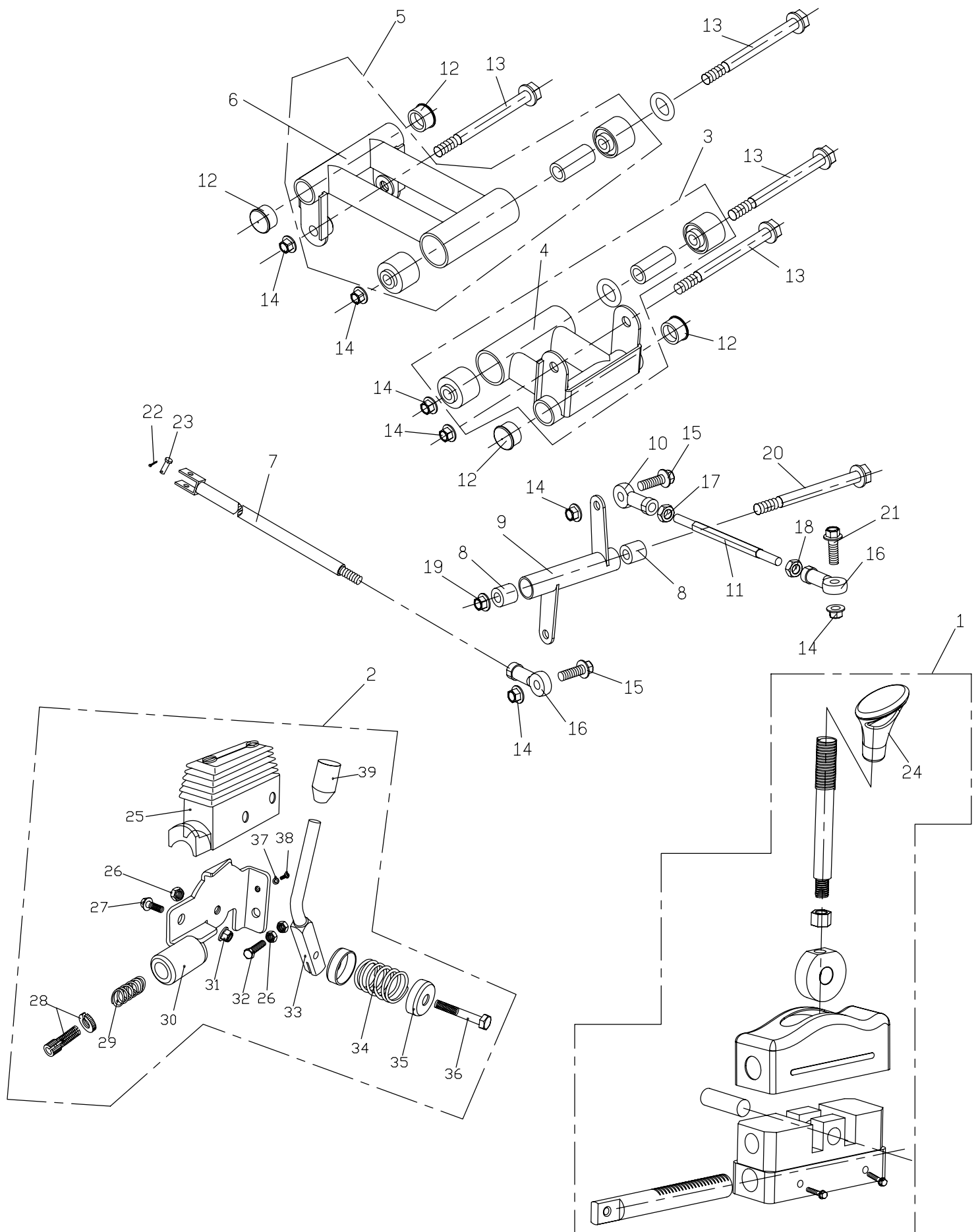
BR-250DUAL



# F 6. REAR SWING ARM ASSY. UPPER

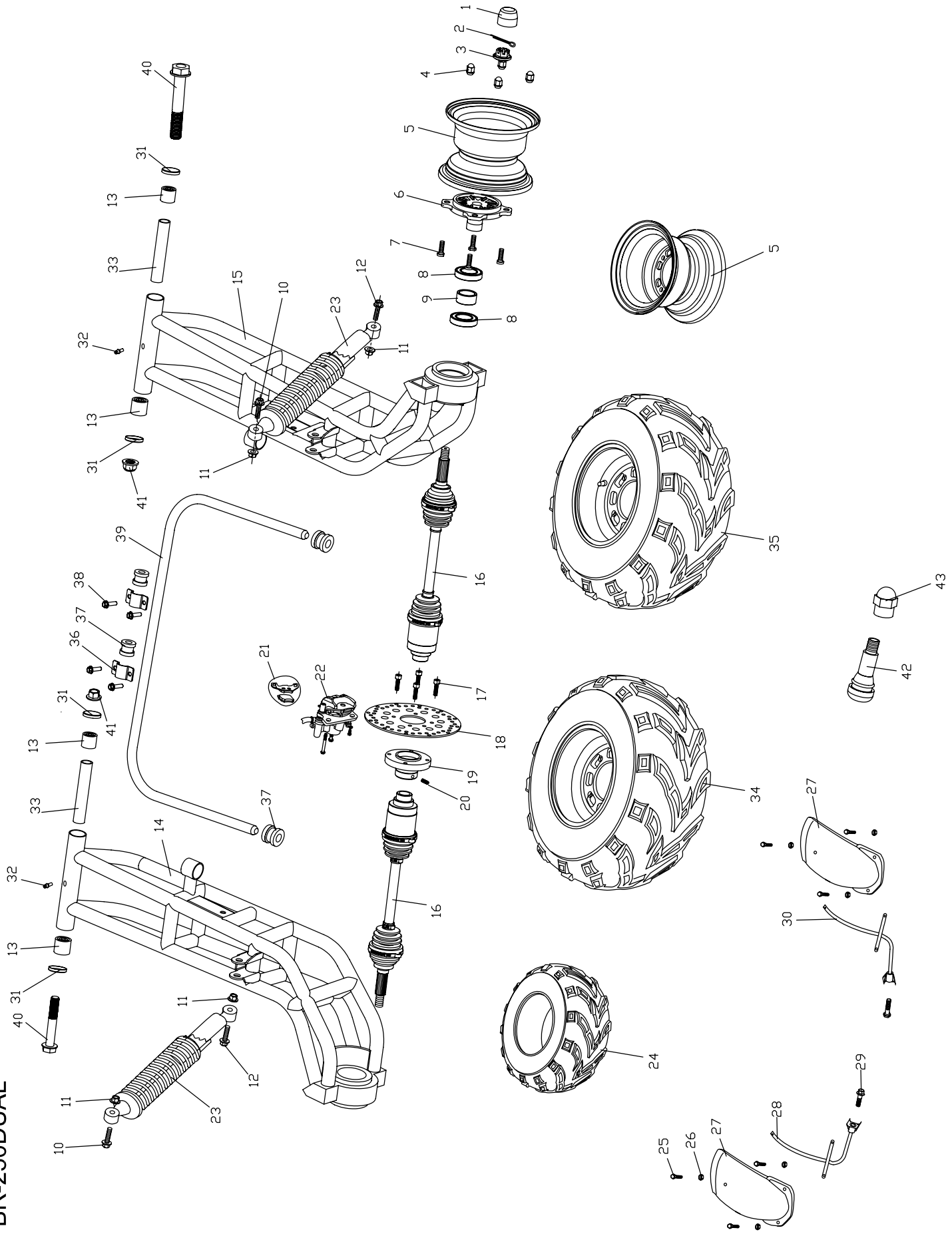
## BR-250DUAL

### GEAR SHIFTING MECHANISM



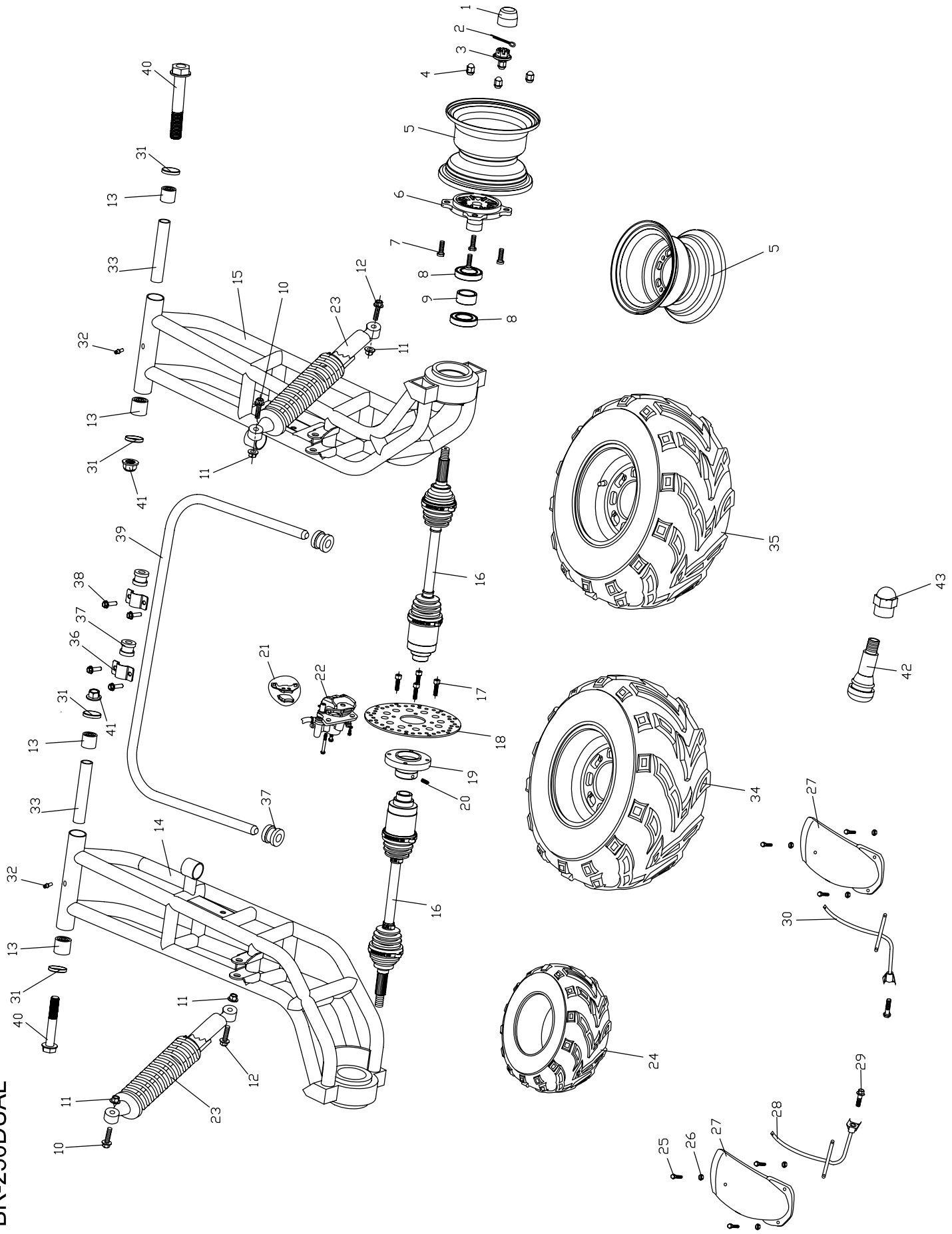
# F7.REAR SWING ARM

BR-250DUAL

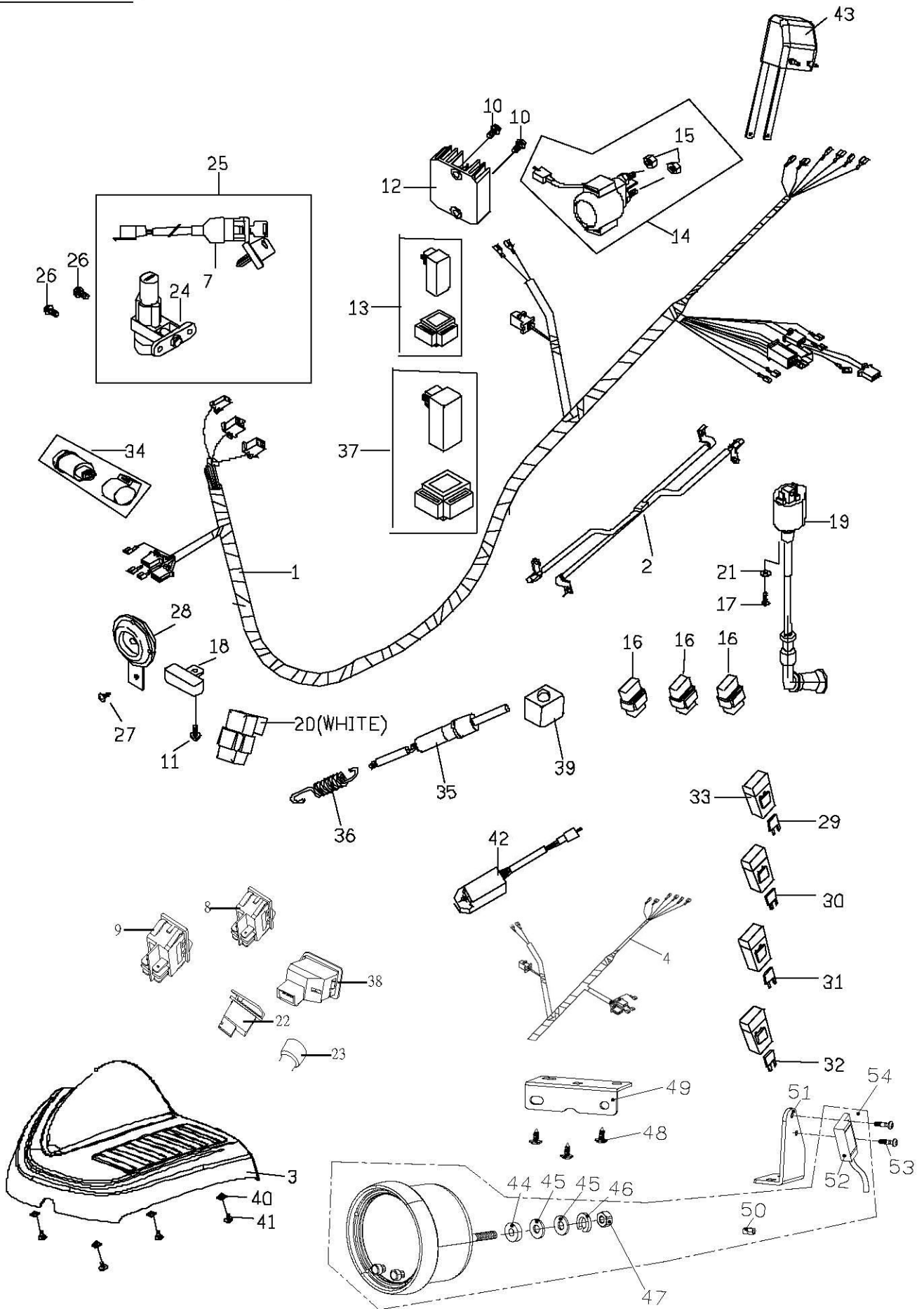


# F7.REAR SWING ARM

BR-250DUAL



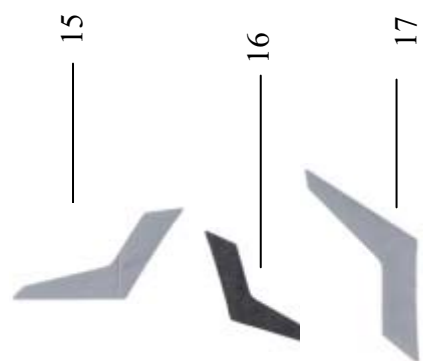
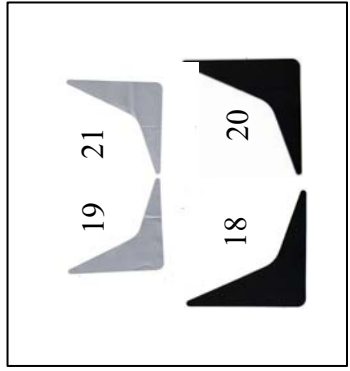
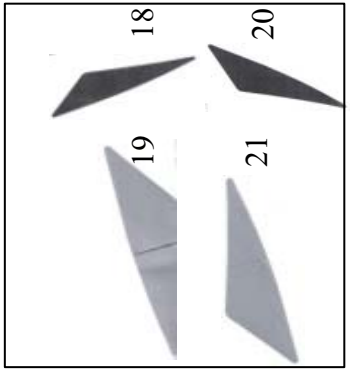
# F8 WIRING (BR250-DUAL)



# F9. BR250 LABELS

For before 2005 vehicle

For from 2006 vehicle



28

27

31

32

30

26

24

25

(for RH-seat driver)

23

23(for LH-seat driver)

17

16

15

11

14

13

12

9

10

4

5

6

7

29

22

23

24

25

26

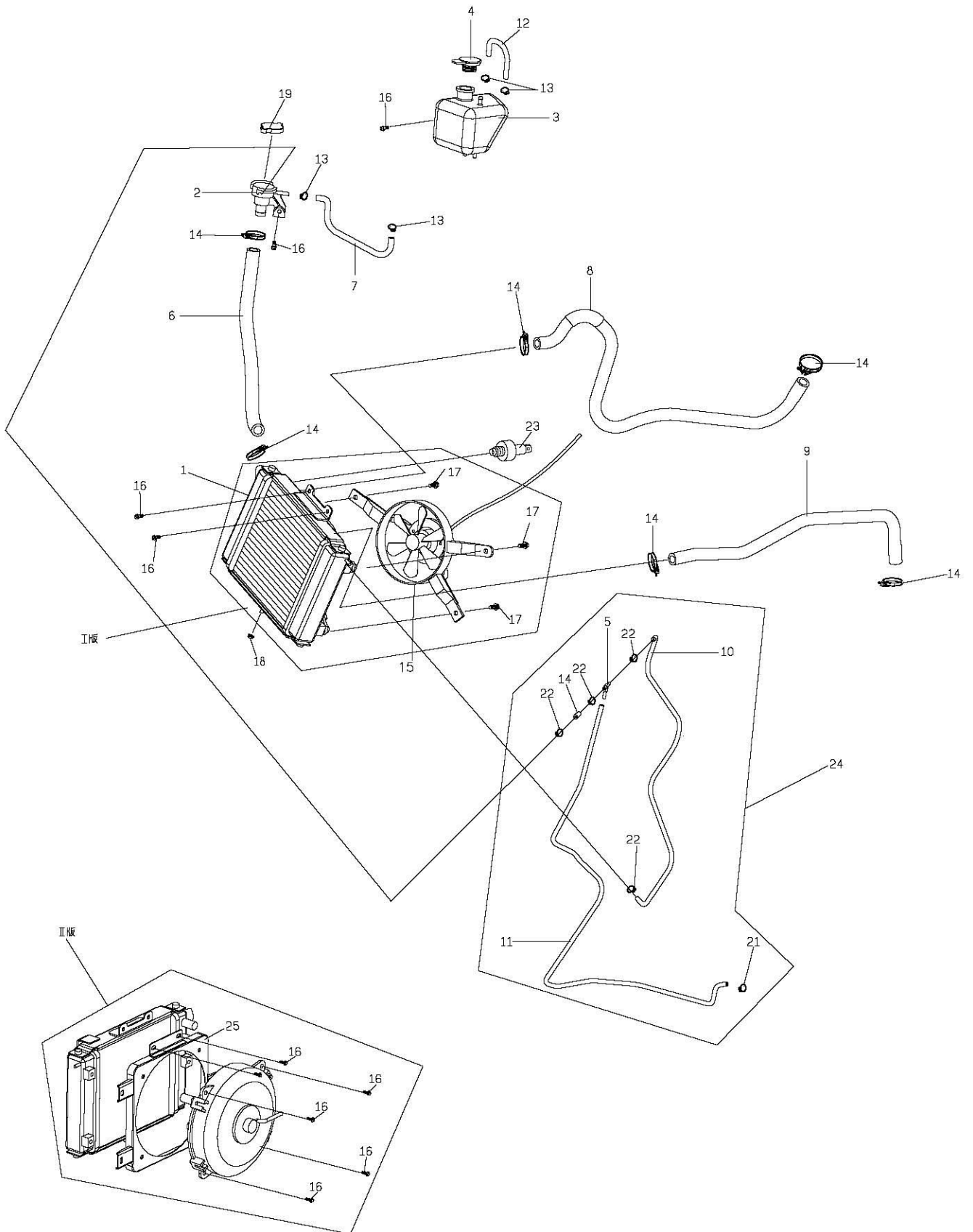
32

27

31

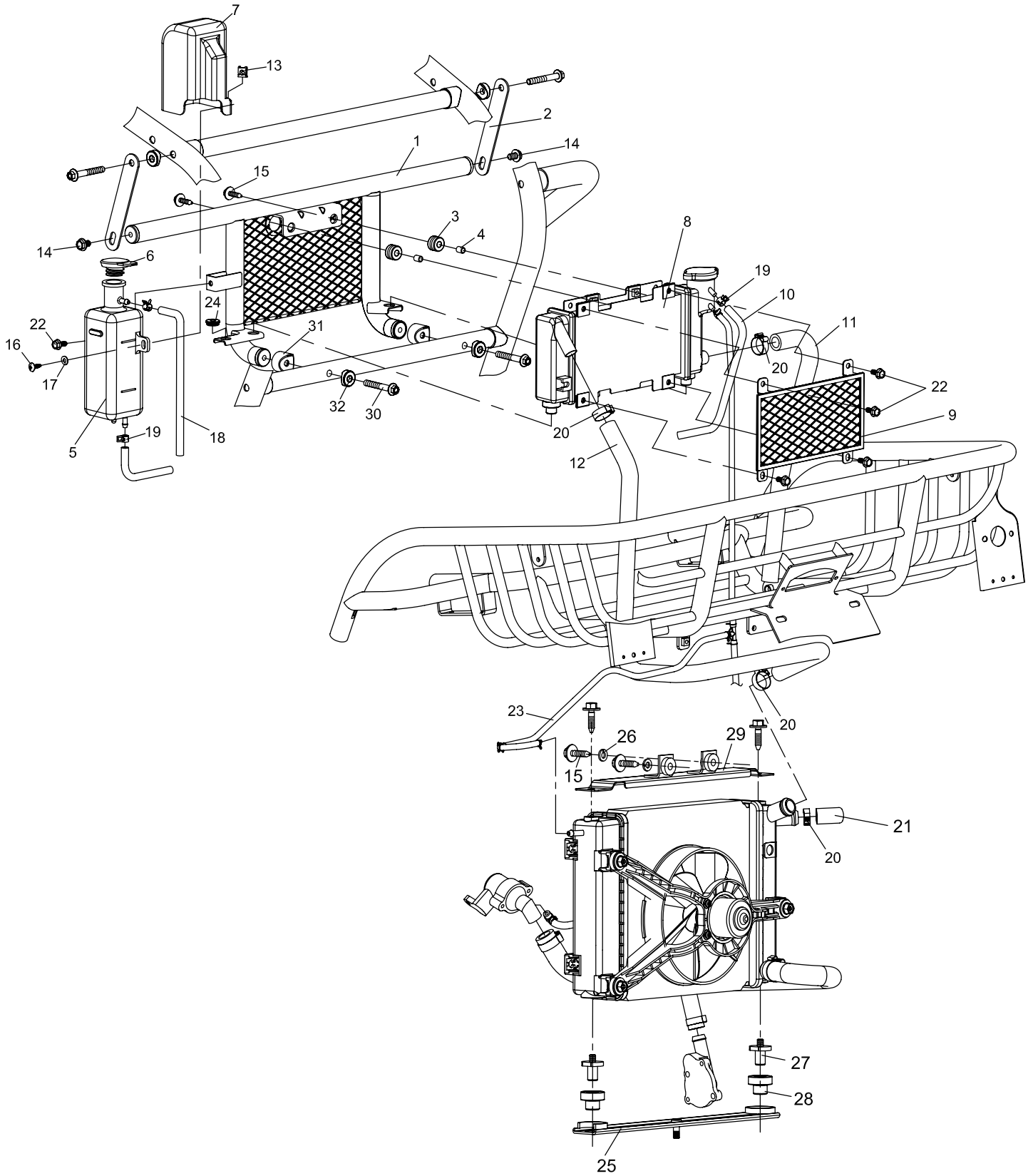
28

# F10 散熱器總成 RADIATOR ASSY



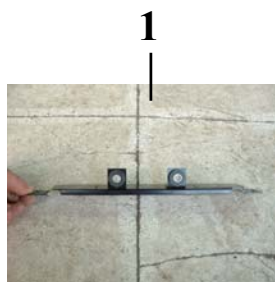
# F11. RADIATOR KITS

## KIT PART BR-250 DUAL





# Damper set accessories

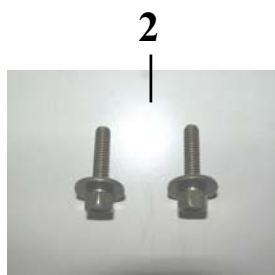


Kart forward direction



New upper bracket of radiator

Also keep the thin backward



Old one

New one



Take rubber pad away, also put on new one



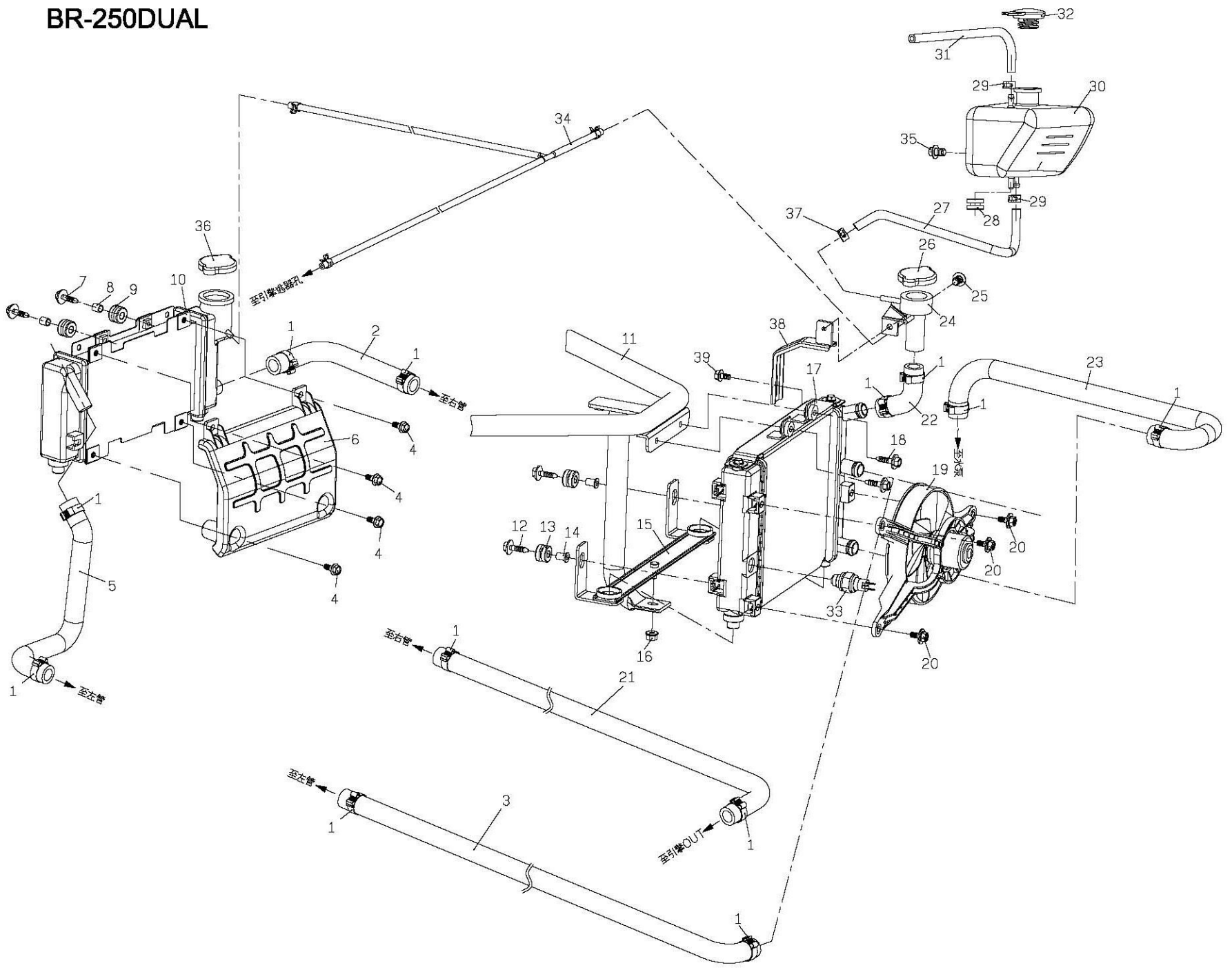
Non-closed form circle face to left side



Put the rubber damper (item 5) on lower bracket of radiator

# F12. RADIATOR ASSY

## BR-250DUAL





PGO SCOOTERS PGO SCOOTERS PGO SCOOTERS

Printed May 20, 2006